

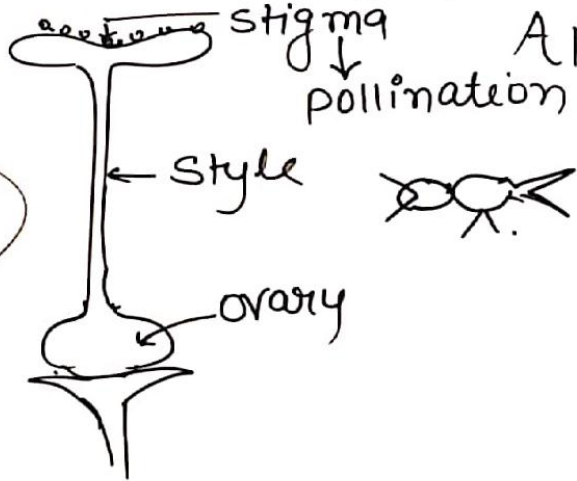
# Apiculture { "Bee Keeping

Bee Keeping honey bee (Maintain.)

Honey bees → are pollinators ⇒ Sunflower, Brassica, Apple etc - Pear

Active  
सक्रियों कम ↓  
Active

वसन्त (Spring) ↑↑



# Apiculture [Bee Keeping]

## [Important species of honey bee]

Apis dorsata (Rock bee)	Apis indica (Indian Mona bee)	Apis florea "Bhringabeen"	Apis Mellifera "European bee"
<ul style="list-style-type: none"> <li>• It is also called <u>Sarambee</u>.</li> <li>• It is largest size and yield <u>highest amount of honey</u>.</li> <li>• It is highly <u>Aggressive</u> (आक्रामक). "पालना संभव नहीं"</li> </ul>	<ul style="list-style-type: none"> <li>"Most common honey bee"</li> <li>All <math>\Rightarrow</math> India</li> <li>It is mild in nature (शान्त)</li> <li><u>Mona bee</u> <math>\Rightarrow</math> 3-4 Kg शहद honey</li> </ul>	<ul style="list-style-type: none"> <li>Smallest in size</li> <li>Mild in a nature</li> <li>Communally (X)</li> <li>only about 250 gram "honey"</li> </ul>	<ul style="list-style-type: none"> <li>It is mild in nature.</li> <li>9-10 times as compared to <u>Mona bee</u> (3-4kg)</li> <li>40 Kg <math>\Rightarrow</math> honey</li> <li>Italian variety</li> <li>Most common used in commercial pool</li> </ul>

15,00,000 (lifespan)  
 "laying egg"  
 Per day  $\Rightarrow$  2,000

# Apiculture / Bee Keeping Organisation

non reproductive group of worker bee is also

They show  $\Rightarrow$  Polymorphism AND 'Good division of labour'  
 Called Eusocial insect

## Queen

It is about 15-20 mm long.  
 worker bee

3 times larger 3 times heavier

"Leg and wing are short but crop is long" 2,000

$\Rightarrow$  Ovary  $\Rightarrow$  filled with egg's

Only one queen develops fertile

It has 32 chromosomes

Royal Jelly

"egg production"

## Drones

About "100 male bee"  
 $\hookrightarrow$  one hive

$\Rightarrow$  7-15 mm long

\* Salivary gland, मसूला Gland  
 लार, 'Secrets'  
 Stings  $\Rightarrow$  (X)

Nutrition  $\hookrightarrow$  'worker bee'

(FUNCTION)

$\hookrightarrow$  Sole duty of drone is

$\hookrightarrow$  fertilize  $\rightarrow$  queen

$\Rightarrow$  Chromosome  $\Rightarrow$  16

## Workers

Maximum no. in a hive -  
 smallest individual.

\* Tibia  $\Rightarrow$  "pollen basket"

"hind leg"  $\downarrow$   
 collection of pollen grains

Wax glands  
 $\hookrightarrow$  2-5 abs

6-8 (life)"