

SEX Linkage

(X) linkage

- Eye's colour of Drosophila
 - Red
 - White
- * ⇒ Haemophilia
- Colour blindness

(Y) linkage Y → Male

- * → Hypertrophicosis

X-linkage

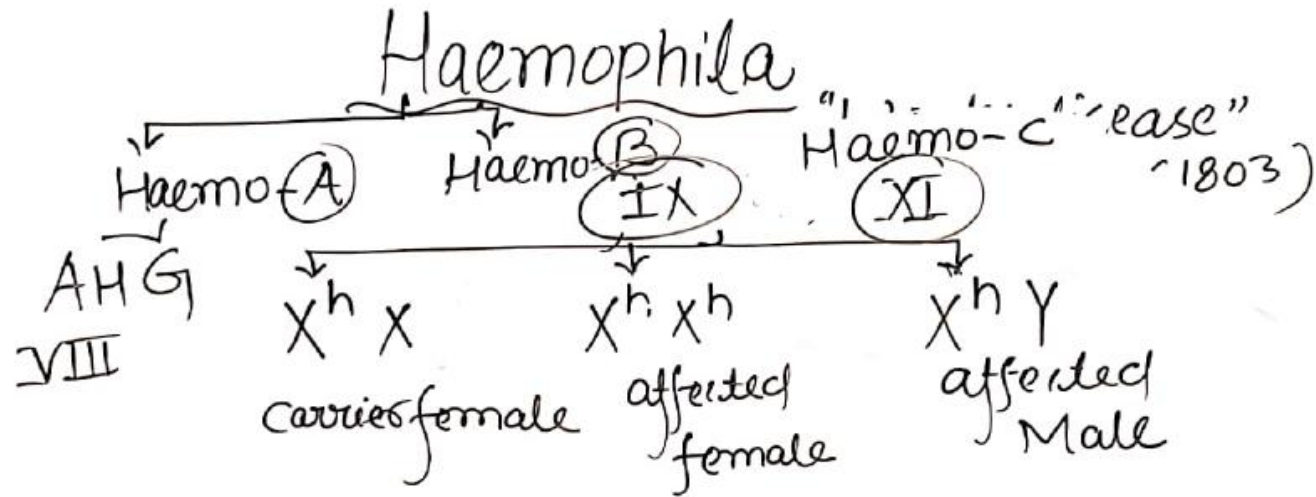
For Example \Rightarrow Eyes colour in Drosophila

Homozygous - white colour eyed female $\Rightarrow X^w X^w$

(A) Hemizygous red eyed Male $\Rightarrow X^+ Y$

(B) Hemizygous white eyed Male $\Rightarrow X^w Y$

$X^+ Y$ $X^w Y$



AA -

Aa -

aa -

