

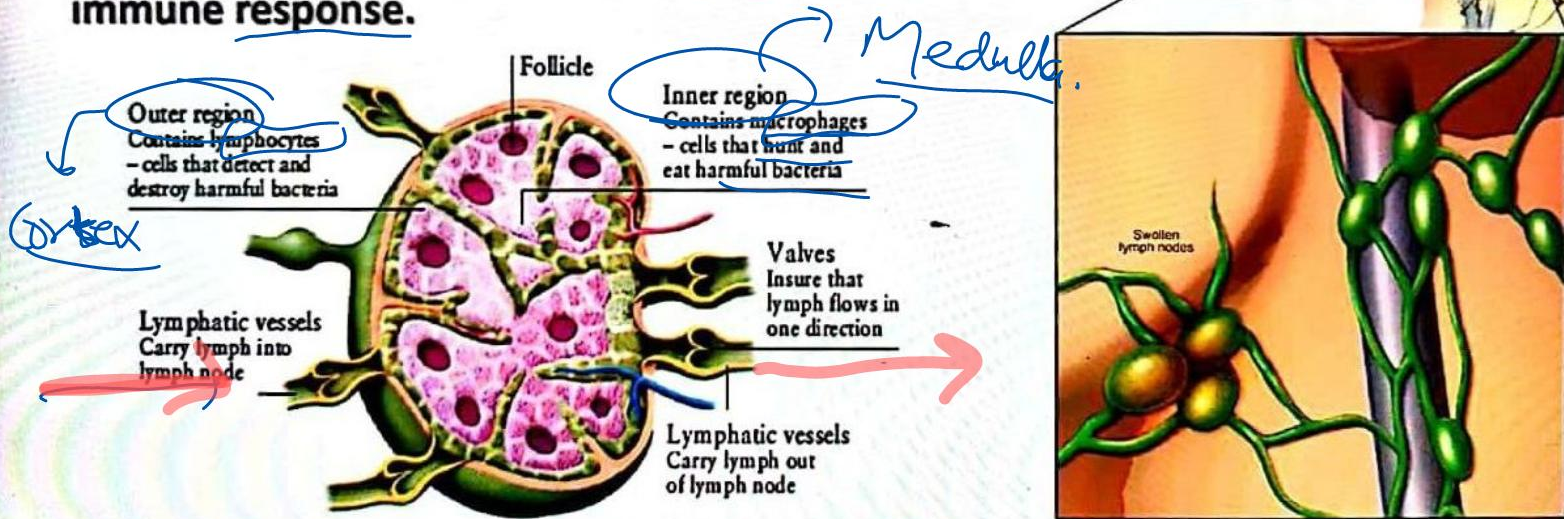
HUMAN IMMUNE SYSTEM

LYMPHOID ORGANS

SECONDARY LYMPHOID ORGANS

Lymph nodes

- Found in lymphatic system.
- They trap microorganisms or other antigens. *Pathogens*
- Trapped antigens activate lymphocytes and cause immune response.



HUMAN IMMUNE SYSTEM

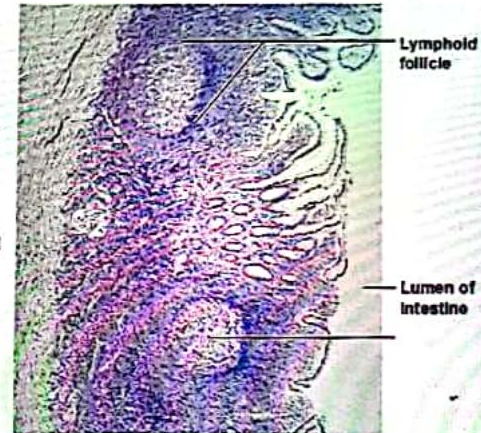
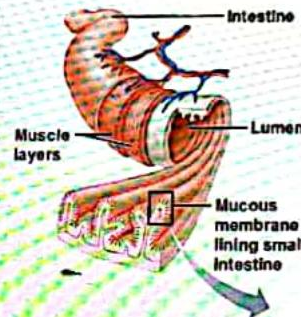
LYMPHOID ORGANS

SECONDARY LYMPHOID ORGANS

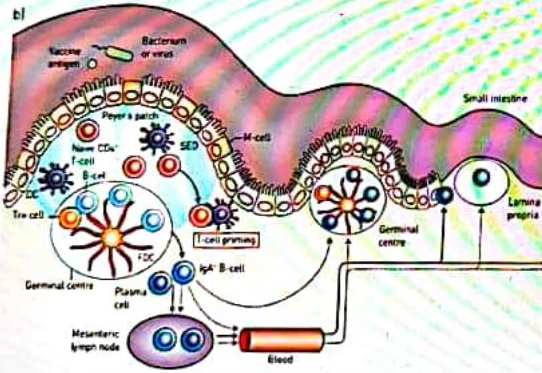
MALT

- **MALT (Mucosa Associated lymphoid tissue)** is located within the lining of **respiratory, digestive & urinogenital tracts**.
- It constitutes **50%** of lymphoid tissue.

Mucosa-Associated Lymphoid Tissue (MALT)



Lymphoid tissue from mucosa of small intestine (14x)



COMMON INFECTIOUS DISEASES IN MAN

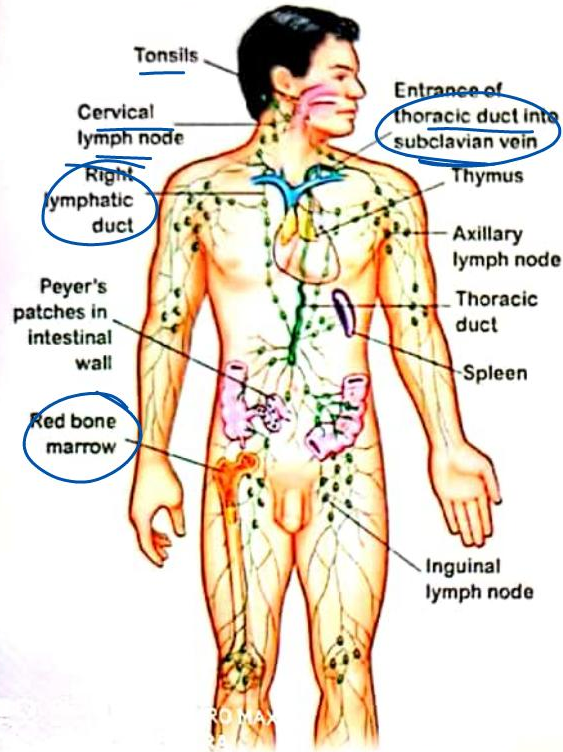
Control & elimination of the vectors (e.g. mosquitoes)

eat Mosq. larvae

Introduce
larvivorous
fishes like
Gambusia in
ponds.



HUMAN IMMUNE SYSTEM



- It is the system that gives immunity to the body by recognizing, responding and remembering foreign antigens.
- It plays role in allergic reaction, auto-immune disease and organ transplantation.
- It includes lymphoid organs, tissues, cells and antibodies.



As the housefly is related with *Entamoeba histolytica*, *Aedes* mosquito is related with

(A) Filariasis → ♀ *Culex*

~~(B) Dengue → *Aedes*~~

(C) Virus

(D) Plasmodium → ♀ *Anopheles*

Amoebiasis or amoebic dysentery is caused by

- (A) Entamoeba histolytica, a protozoan parasite in the small intestine
- (B) Escherichia coli, a protozian parasite in the small intestine
- (C) Entamoeba histolytica, a protozoan parasite in the large intestine
- (D) Escherichia coli, a protozoan parasite in the large intestine

Select the option that completes the given analogy

Pneumonia : Streptococcus pneumoniae ::

Typhoid : _____

- (A) Plasmodium falciparum
- (B) Haemophilus influenzae
- (C) ~~Salmonella typhi~~
- (D) Wuchereria bancrofti

The following symptoms: constipation, abdominal pain, cramps, stools with excess mucous and blood clots; belong to which category?

- ~~(A) Amoebiasis~~ → Amoebic Dysentery.
(B) Malaria
(C) Filariasis
(D) Pneumonia

What is necessary for achieving good health?

(A) Vaccination against genetic disorders, awareness about diseases and control of vectors

(B) Vaccination, awareness about diseases and proper disposal of waste

(C) Control of vectors and maintenance of hygienic food and water resources only

(D) Self-care and awareness along with immunization.

Match the disease in column-I with the appropriate items (pathogen/prevention/treatment) in column-II

	Column-I		Column-II
A.	Amoebiasis	1.	Treponema pallidum
B.	Diphtheria	2.	Use only <u>sterilized food</u>
C.	Cholera	3.	DPT Vaccine
D.	Syphilis	4.	Use oral rehydration (ORS)

(A) A-1 B-2 C-3 D-4

(B) A-2 B-4 C-1 D-3

(C) A-2 B-1 C-3 D-4

(D) A-2 B-3 C-4 D-1

The active form of *Entamoeba histolytica* feed upon

(AIPMT)

(A) Erythrocytes mucosa and submucosa of colon

(B) Mucosa and submucosa of colon only

(C) Food in intestine

(D) Blood only

In which disease does mosquito transmitted pathogen cause chronic inflammation of lymphatic vessels?

- ~~(A) Elephantiasis~~
- (B) Ascariasis
- (C) Ringworm disease
- (D) Amoebiasis