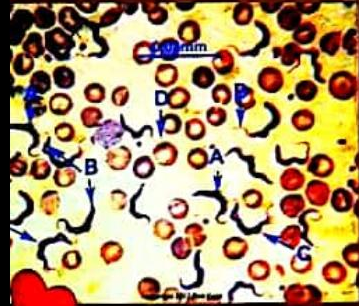


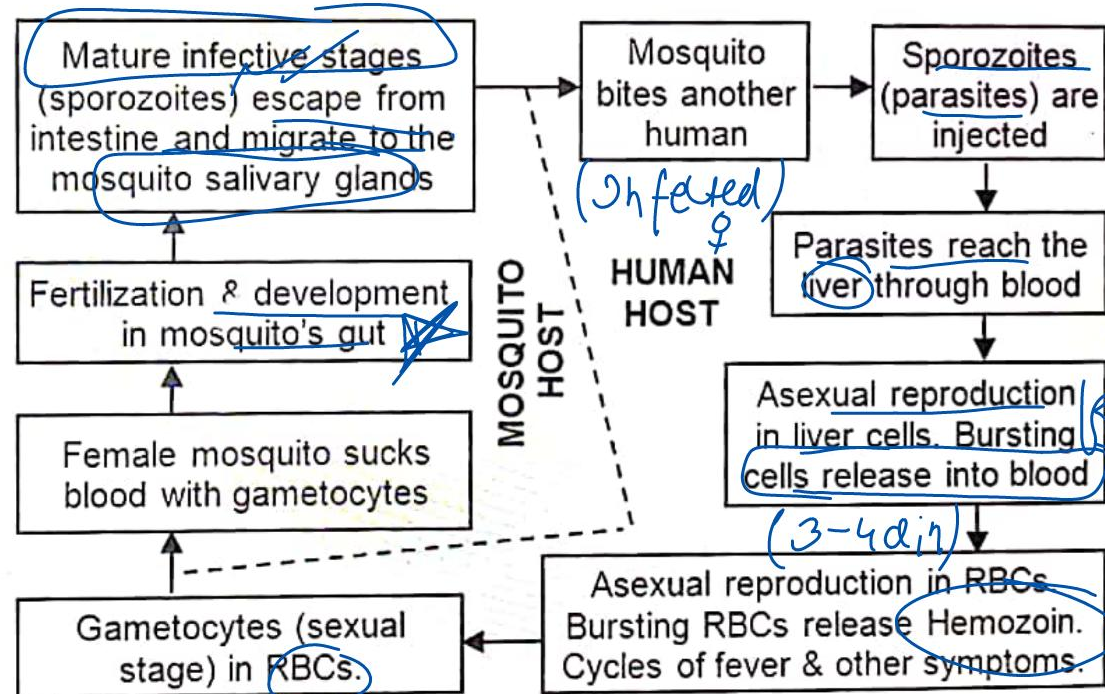
COMMON INFECTIOUS DISEASES IN MAN

ROTOZOAN DISEASES

1. MALARIA



Life cycle of Plasmodium



COMMON INFECTIOUS DISEASES IN MAN

PROTOZOAN DISEASES

2. AMOEBIASIS (AMOEBIC DYSENTERY)

Pathogen

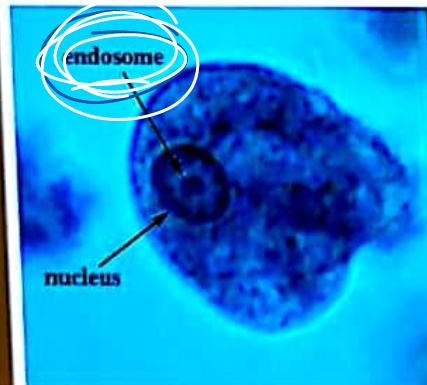
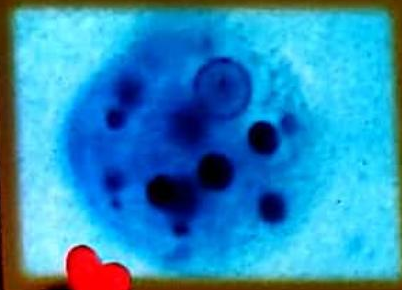
Entamoeba histolytica (Amoebic Dysentery)

Mode of transmission

Houseflies (mechanical carriers) transmit parasites from faeces to food & water.

Symptoms

Constipation, abdominal pain and cramps, stools with excess mucous and blood clots.



COMMON INFECTIOUS DISEASES IN MAN

HELMINTH DISEASES

1. ASCARIASIS

Pathogen

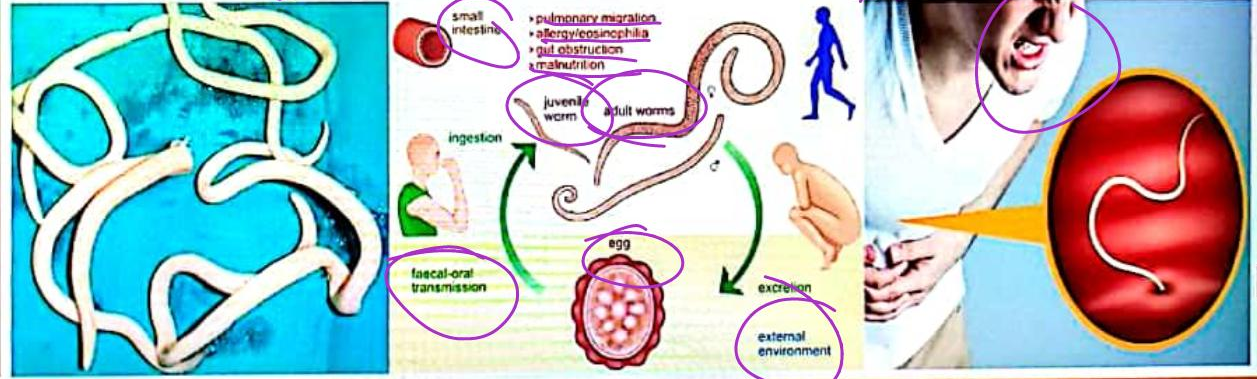
Ascaris (Intestinal parasite).

Mode of transmission

Soil, water, vegetables, fruits etc. contaminated with faeces containing eggs of parasites.

Symptoms

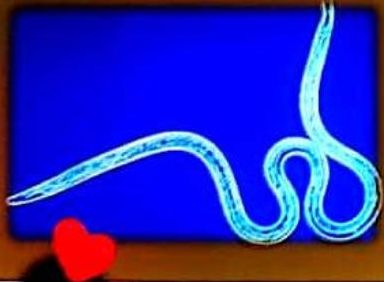
Internal bleeding, muscular pain, fever, anaemia and blockage of intestinal passage.



COMMON INFECTIOUS DISEASES IN MAN

HELMINTH DISEASES

2. FILARIASIS (ELEPHANTIASIS)



Pathogen

Filarial worms or *Wuchereria* (*W. bancrofti* & *W. malayi*)

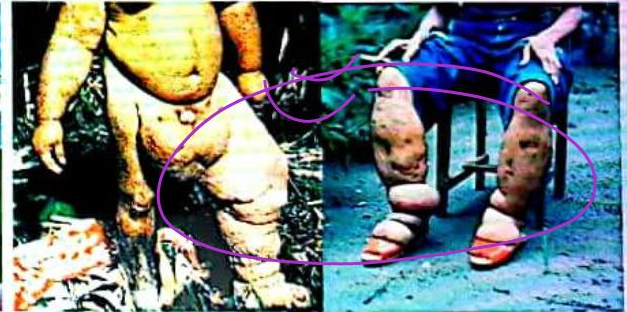
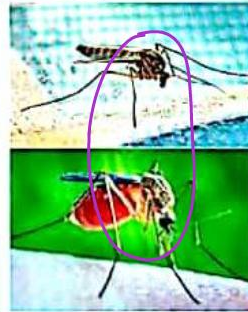
Mode of transmission

Bite of female *Culex* mosquito.

Genus

Symptoms

Filarial worms live in lymphatic vessels (usually of lower limbs). It causes chronic inflammation of the organs in which they live for many years. Limbs and genital organs may be deformed.



COMMON INFECTIOUS DISEASES IN MAN

FUNGAL DISEASES

RINGWORMS

Pathogen

Microsporum, Trichophyton & Epidermophyton.
They are seen in groin, b/w toes etc.

Mode of transmission

From soil or by using towels, cloths, comb etc.
Heat and moisture help fungi to grow.



dermatophyte fungi



not washing hands



close contact with those infected



damp skin for extended time



Common cold differs from pneumonia in, that

- (A) Pneumonia is a communicable disease, whereas common cold is a nutritional deficiency disease
- (B) Pneumonia can be prevented by a live attenuated bacterial vaccine, whereas the common cold has no effective vaccine.
- (C) Common cold is caused by a virus, while pneumonia is caused by a bacterium.
- (D) Pneumonia pathogen infects alveoli whereas common cold affects the nose and the respiratory passage but not the lungs.

Common cold is not cured by antibiotics because it is

(A) Caused by a Gram0negaive bacterium

(B) Not an infectious disease

(C) Viral disease

(D) Caused by a Gram-positive bacterium

virus

The most infectious human ailment caused by a virus
is

- ~~(A) Common Cold~~ → Rhinovirus (→ Rhinitis)
- (B) AIDS
- (C) Pneumonia
- (D) Lung Cancer

The common cold is characterized by nasal congestion and discharge, sore throat, hoarseness, cough, headache tiredness, etc. which usually lasts for 3-7 days. Infection may occur through

- (A) Contaminated food and water
- (B) Hypodermic needles
- (C) Droplet infection resulting from cough and sneezes
- (D) Bit of infected mosquito

Widal test is employed for detecting –

(A) Pneumonia

(B) Malaria

~~(C) Typhoid~~

(D) Cholera

→ *Vibrio cholerae.*

Which is a an infectious disease –

- (A) Coronary thrombosis ~~→ C.A. disease → CABG~~
 (Coronary Artery Bypass Surgery)
- (B) Diphtheria (Oral - Ghotu)
 → Corynebact. diphtheriae
- (C) Diabetes mellitus
- (D) Hypertension (TBP)
 → Vaccine: DIT (Diphtheria, Tetanus, Typhoid)