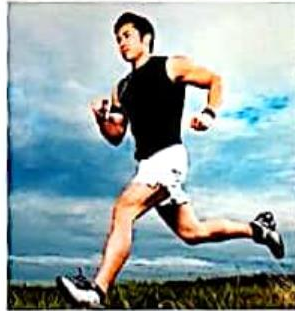
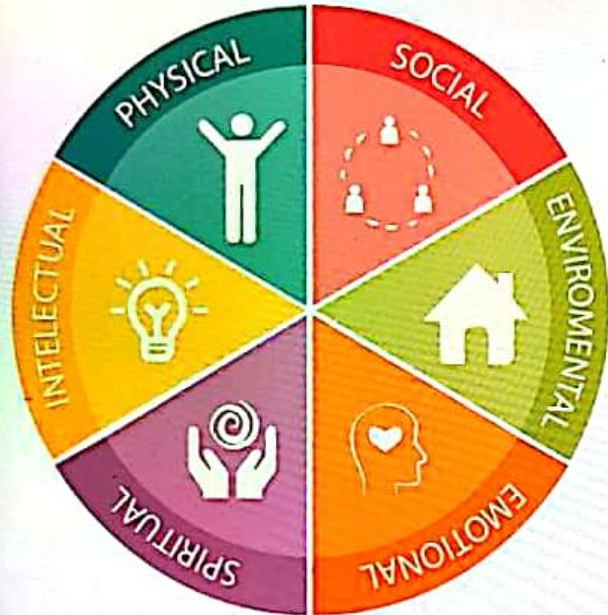
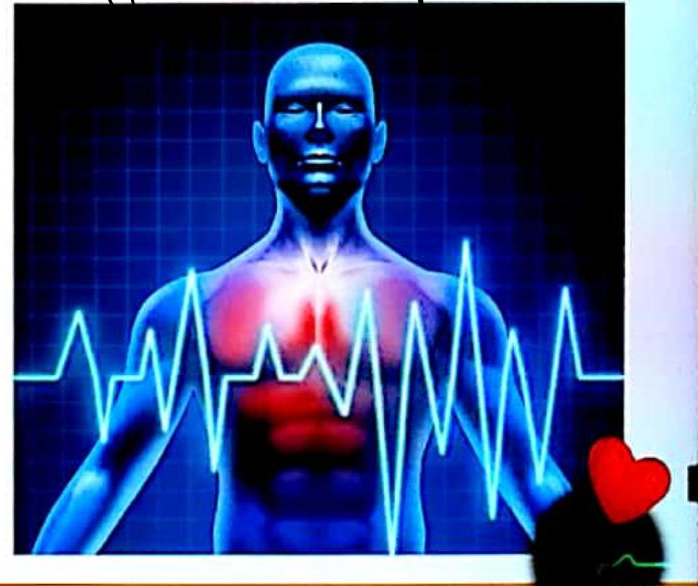
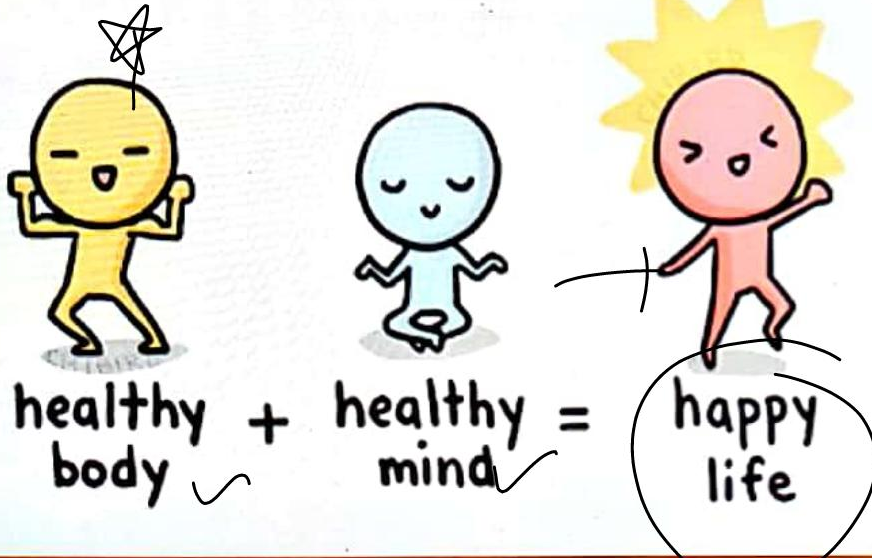


- ✓ **Health** is a state of complete **physical, mental and social well-being.**
- ✓ **Health** is affected by **genetic disorders, infections.**



- ✓ **Mind influences immune system** (through neural and endocrine systems) and thereby health. ↳ Resistance to disease (Pathogens)
- ✓ When the functioning of organs or systems of the body is adversely affected, it is called Disease (Physiological f(M) impair)



DISEASES

→ AIDS, Hepes, Hepatitis-B, (CORONA)

→ CANCER

(Contagious)

Infectious: ✓

Transmits from one person to another.



(Non-contagious)

Non-infectious: ✓

Do not transmit from one person to another.



Disease causing organisms are called **Pathogens**.
Parasites are pathogens as they harm the host.

↳ Pops
Belly



Good humour hypothesis

Hippocrates & Indian Ayurveda system.

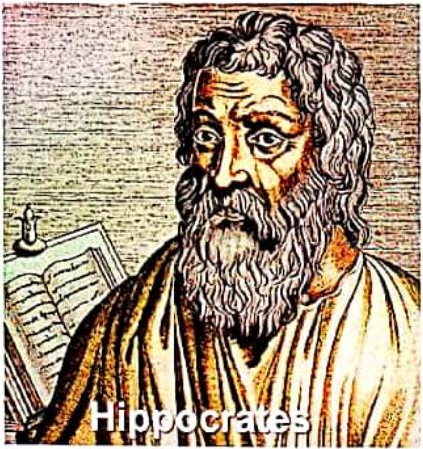
↳ greek philosophers

Black bile persons belong to Hot personality & humours. Have fevers.

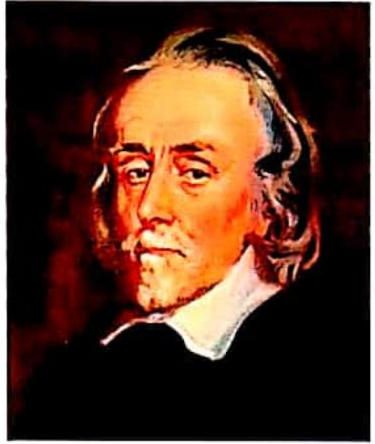
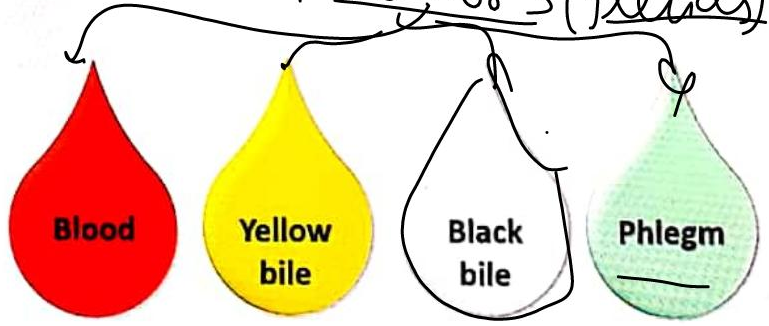
'black bile'

• William Harvey

↳ blood circulation



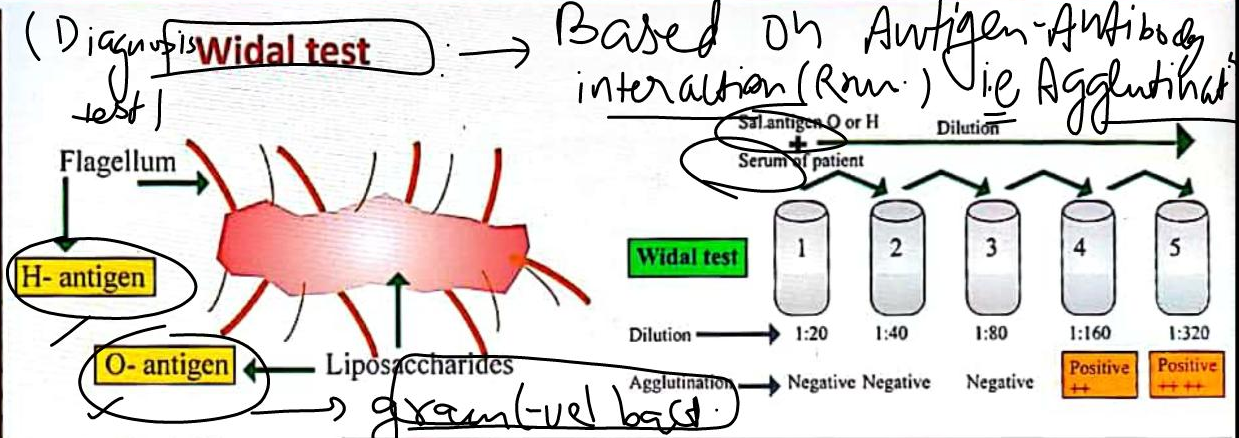
Humors (fluids)



COMMON INFECTIOUS DISEASES IN MAN

BACTERIAL DISEASES

A. Typhoid



Mary Mallon nicknamed **Typhoid Mary** was a professional cook. She was a **typhoid carrier** who continued to spread typhoid for several years through the food she prepared.

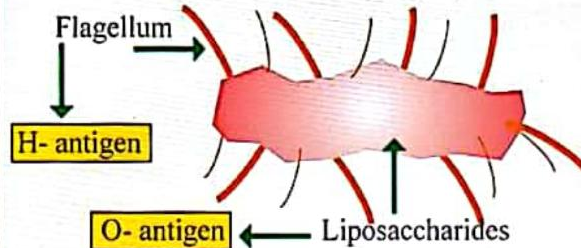
COMMON INFECTIOUS DISEASES IN MAN

BACTERIAL DISEASES

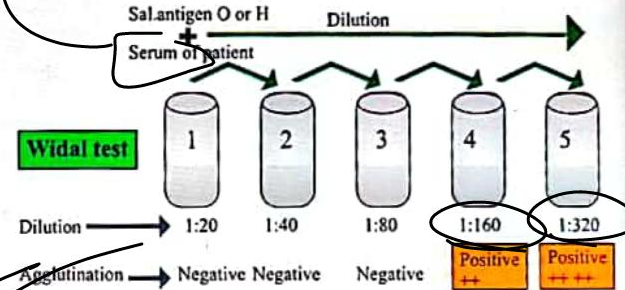
A. Typhoid



Widal test



Plasma - clot. fact. = serum

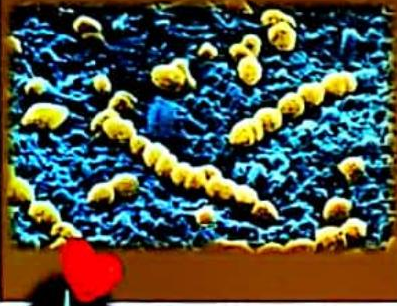


Mary Mallon nicknamed **Typhoid Mary** was a professional cook. She was a **typhoid carrier** who continued to spread typhoid for several years through the food she prepared.

COMMON INFECTIOUS DISEASES IN MAN

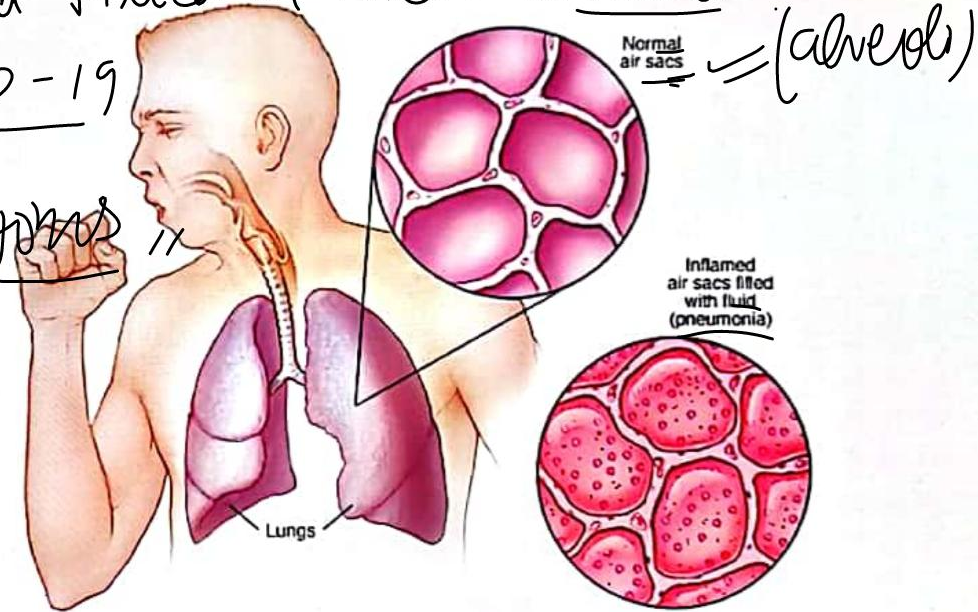
BACTERIAL DISEASES

B. Pneumonia



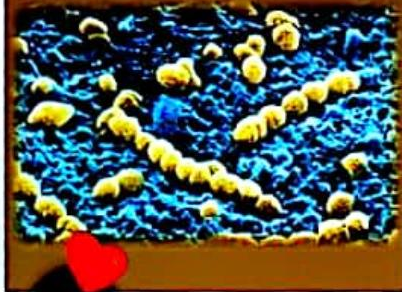
- It infects lung alveoli. not resp. passage.
- fluid filled in these alveoli
- Covid-19

↓
Symptoms



BACTERIAL DISEASES

B. Pneumonia



Pathogen

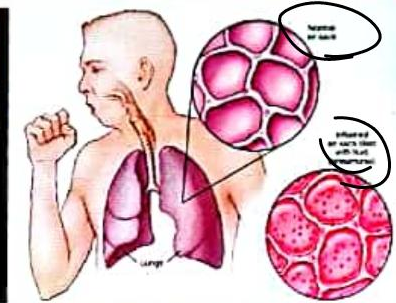
Streptococcus pneumoniae & *Haemophilus influenzae*

Mode of transmission

Inhaling the droplets/aerosols released by an infected person. Sharing glasses and utensils with an infected person.

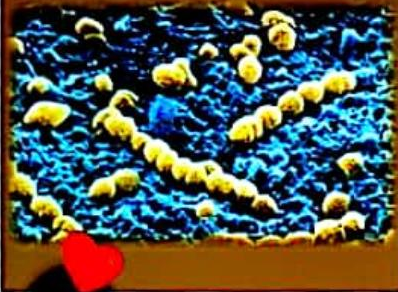
Symptoms

Respiratory problems, fever, chills, cough, headache. In severe cases, lips and finger nails turn grey to bluish colour.



BACTERIAL DISEASES

B. Pneumonia



Pathogen

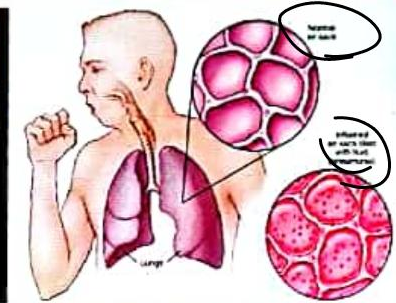
Streptococcus pneumoniae & *Haemophilus influenzae*

Mode of transmission

Inhaling the droplets/aerosols released by an infected person. Sharing glasses and utensils with an infected person.

Symptoms

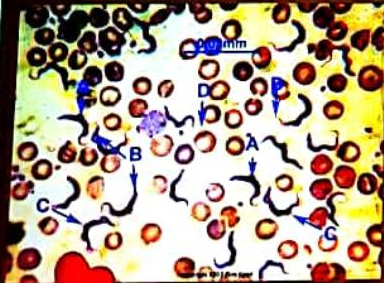
Respiratory problems, fever, chills, cough, headache. In severe cases, lips and finger nails turn grey to bluish colour.



COMMON INFECTIOUS DISEASES IN MAN

PROTOZOAN DISEASES

1. MALARIA



Pathogen

Plasmodium sp. (P. vivax, P. malariae & P. falciparum).
P. falciparum causes most serious (malignant) malaria.

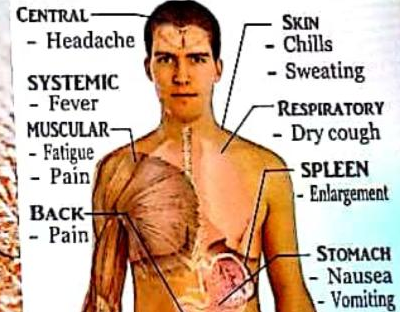
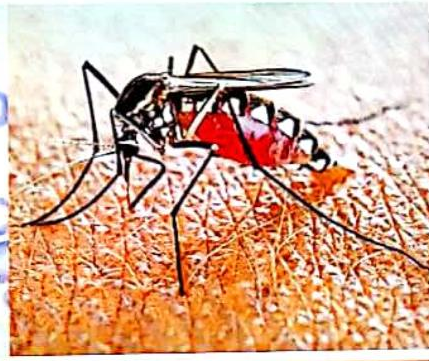
Mode of transmission

By biting of female *Anopheles* mosquito.



Symptoms

Haemozoin (toxin released by Plasmodium) causes chill and high fever recurring every 3-4 days.



VIRAL DISEASES

COMMON COLD



- It infects nose & respiratory passage **but not lungs.**
- It lasts for 3-7 days.



Upper respiratory tract

Nasal cavity

Pharynx

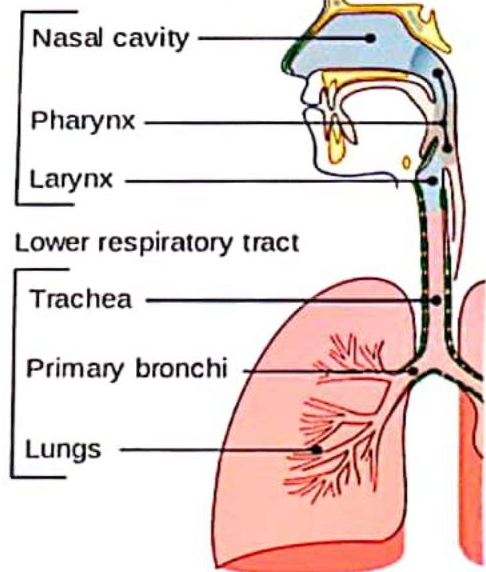
Larynx

Lower respiratory tract

Trachea

Primary bronchi

Lungs

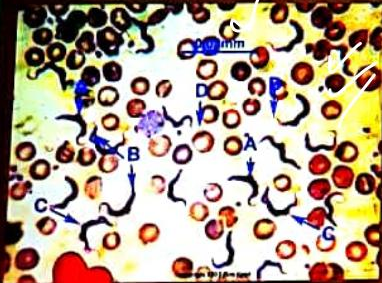


COMMON INFECTIOUS DISEASES IN MAN

PROTOZOAN DISEASES

Sporozoans

1. MALARIA



Pathogen

Plasmodium sp. (*P. vivax*, *P. malariae* & *P. falciparum*).
P. falciparum causes most serious (malignant) malaria.

Mode of transmission

By biting of female Anopheles mosquito. *infected Megaloblast*

Symptoms

Haemozoin (toxin released by Plasmodium) causes chill and high fever recurring every 3-4 days.



Typhoid is

- (A) Caused by a bacterium which infects only the small intestine by means of food and water that is contaminated
- (B) Caused by protozoan which infects small intestine by means of contaminated water and food and then migrates to other organs through blood
- ~~(C) Caused by a bacterium which infects small intestine by means of contaminated water and food and then migrates to other organs through blood.~~
- (D) Caused by protozoan which infects only small intestine by means of food and water that is contaminated.

A cook, carrier of a disease, and spread the disease for many years by the food she prepared. This information is associated with a classic case on medicine, that of

(A) Mary Melon nicknamed Typhoid Mary

(B) Typhoid Mary nicknamed Mary Mallon

(C) Mary Mallon nicknamed Typhoid Mary

(D) Mary Melon nicknamed Typhoid Melon

Which of the following sets represents diseases communicated through contaminated food and water?

(A) Typhoid and Tuberculosis

Resp. Disease

~~(B) Typhoid and Cholera~~

(C) Measles and Rabies

(D) Tuberculosis and Measles

Widal test is carried out to test

(A) Malaria

(B) Diabetes melitus

(C) HIV/AIDS

(D) Typhoid fever