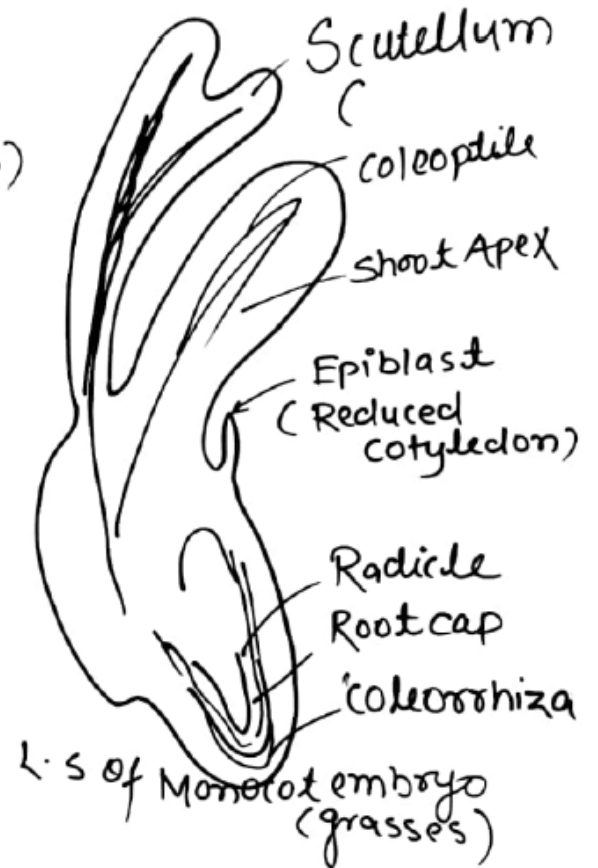
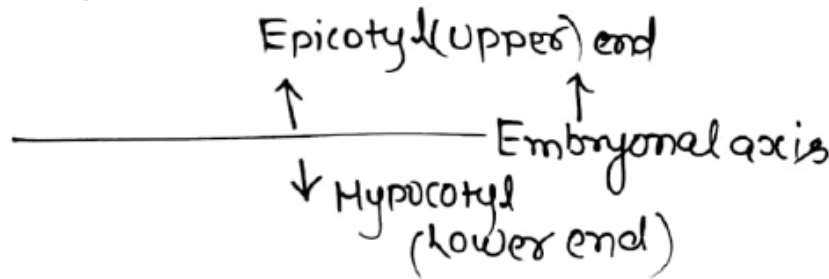
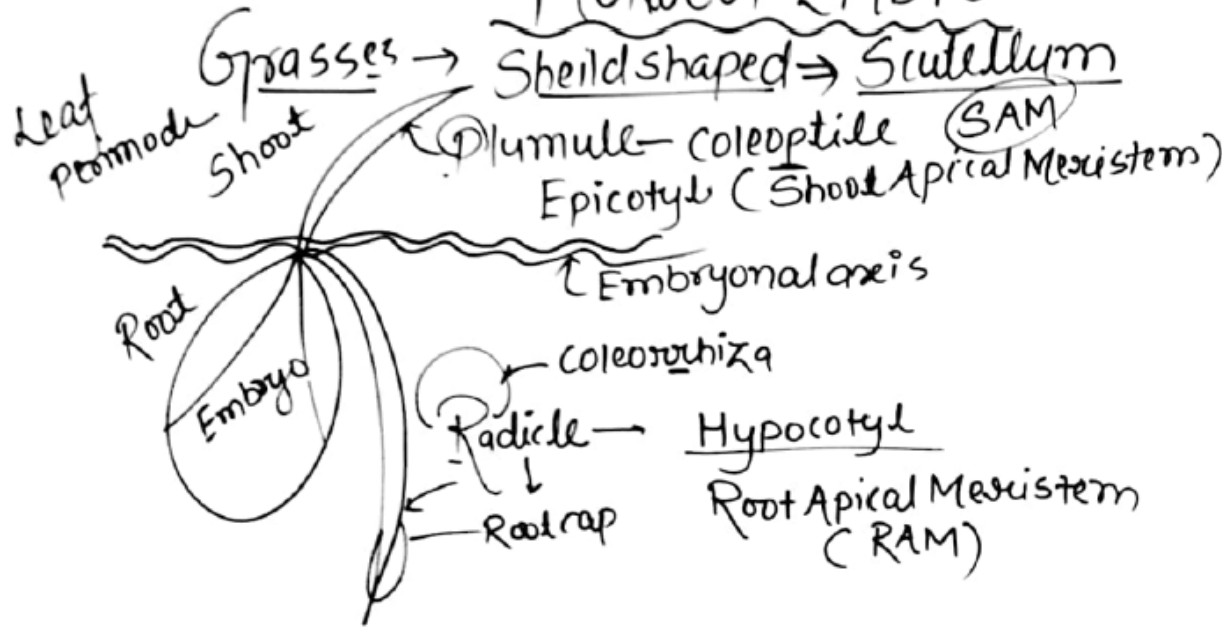
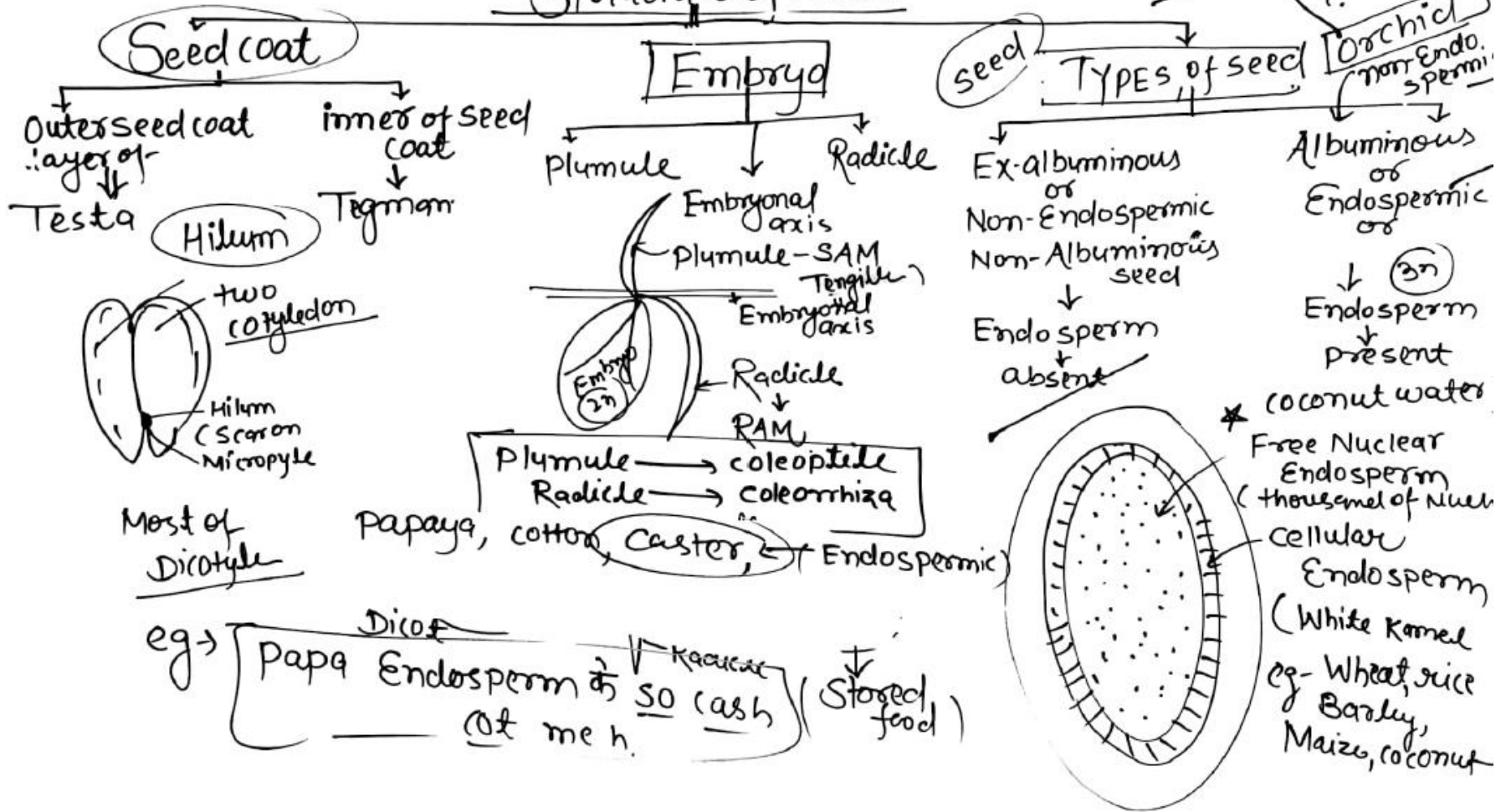


MONOCOT EMBRYO

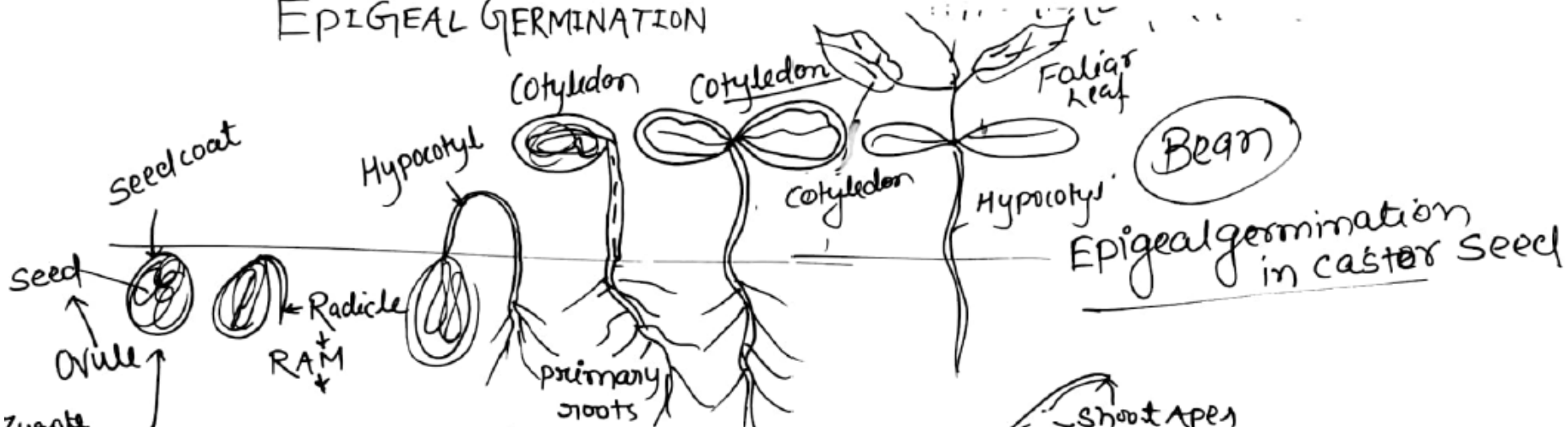


Angiospermic Seed Structure of Seed



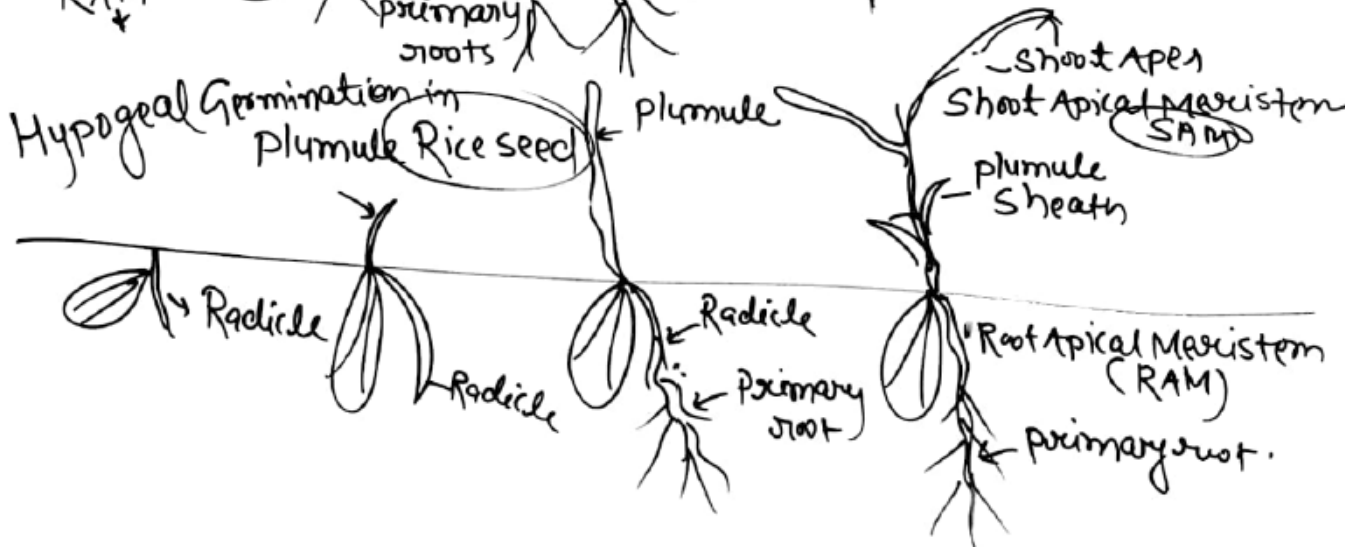
GERMINATION OF SEED

EPIGEAL GERMINATION



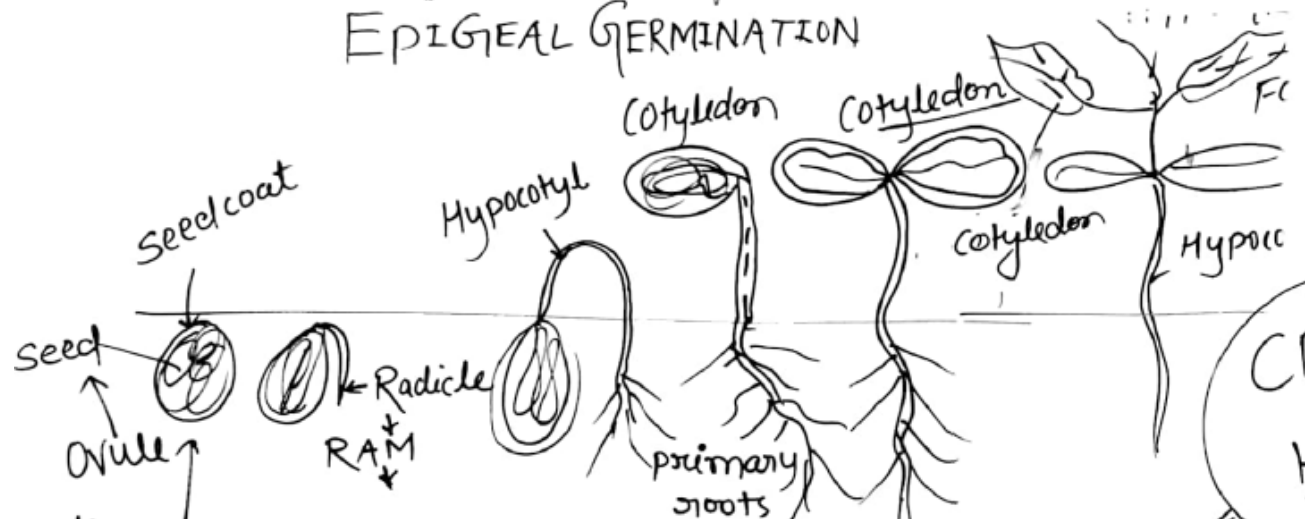
Epigeal germination in castor seed

Hypogeal Germination in Plumule Rice seed

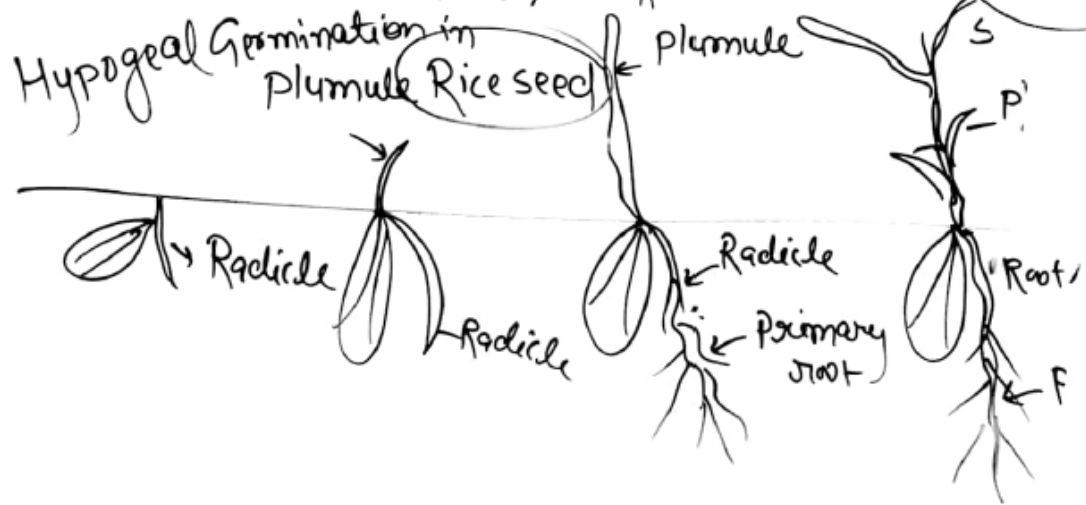


GERMINATION OF SEED

EPIGEAL GERMINATION



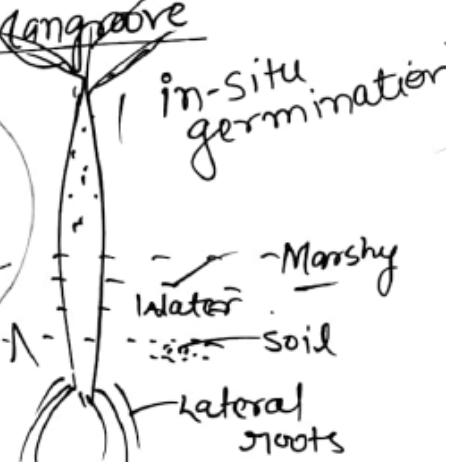
Hypogeal Germination in Plumule Rice seed



VIVIPAROUS GERMINATION

or Vivipary seed
 • Special type of germination
 → Mangrove

CBI
 ↓
 HARS



eg- Rhizophora
Sonneratia
Avicennia