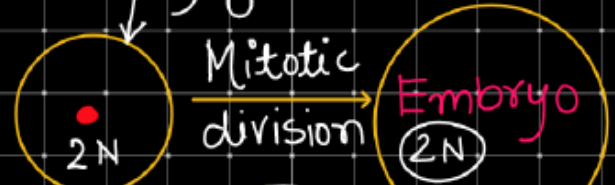


Male gamete + Egg cell
(n) (n)

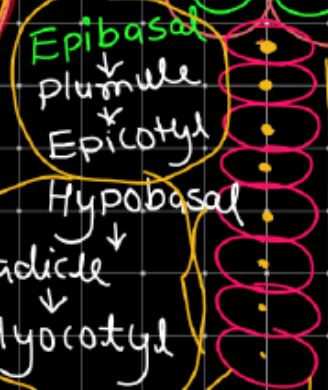
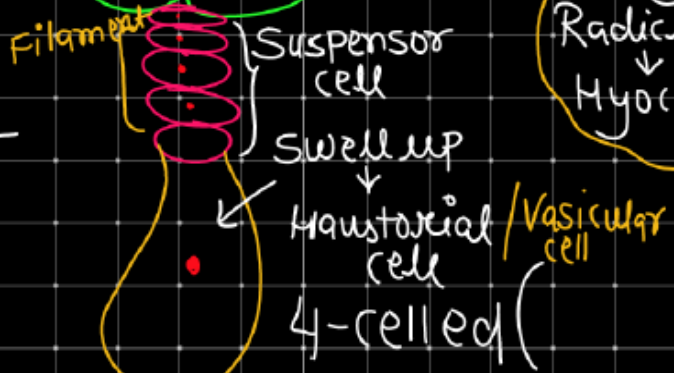
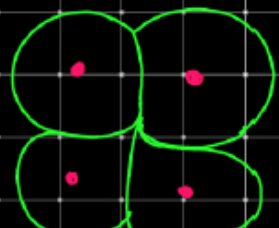
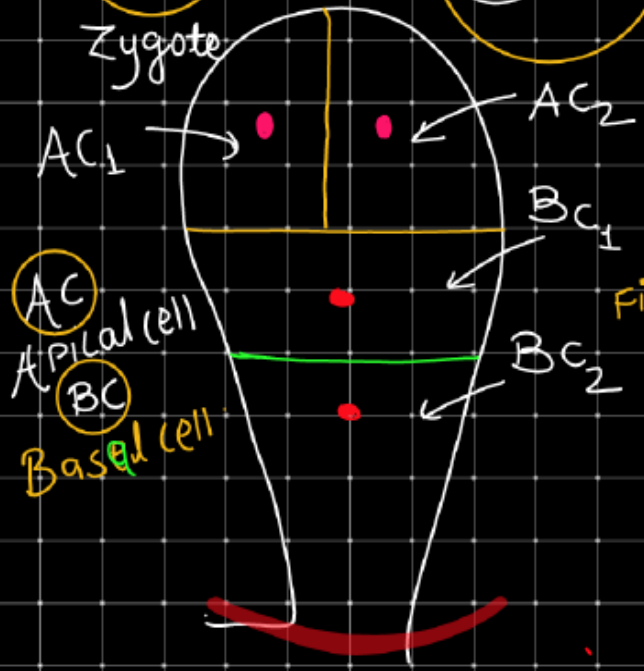
DEVELOPMENT OF EMBRYO IN DICOT

(*Capsella*) ⇒ Crucifer type / Onagrad type

Syngamy

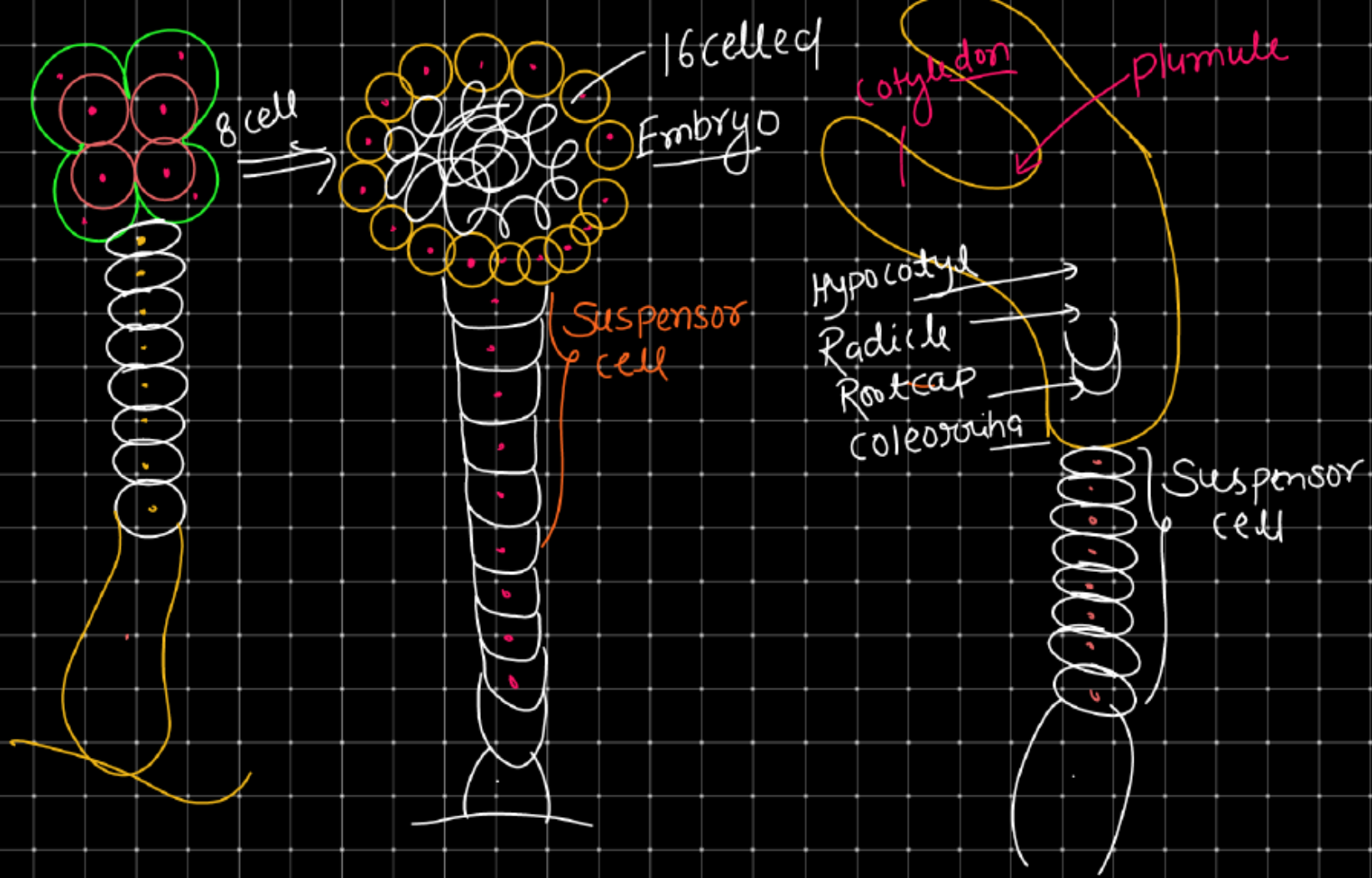


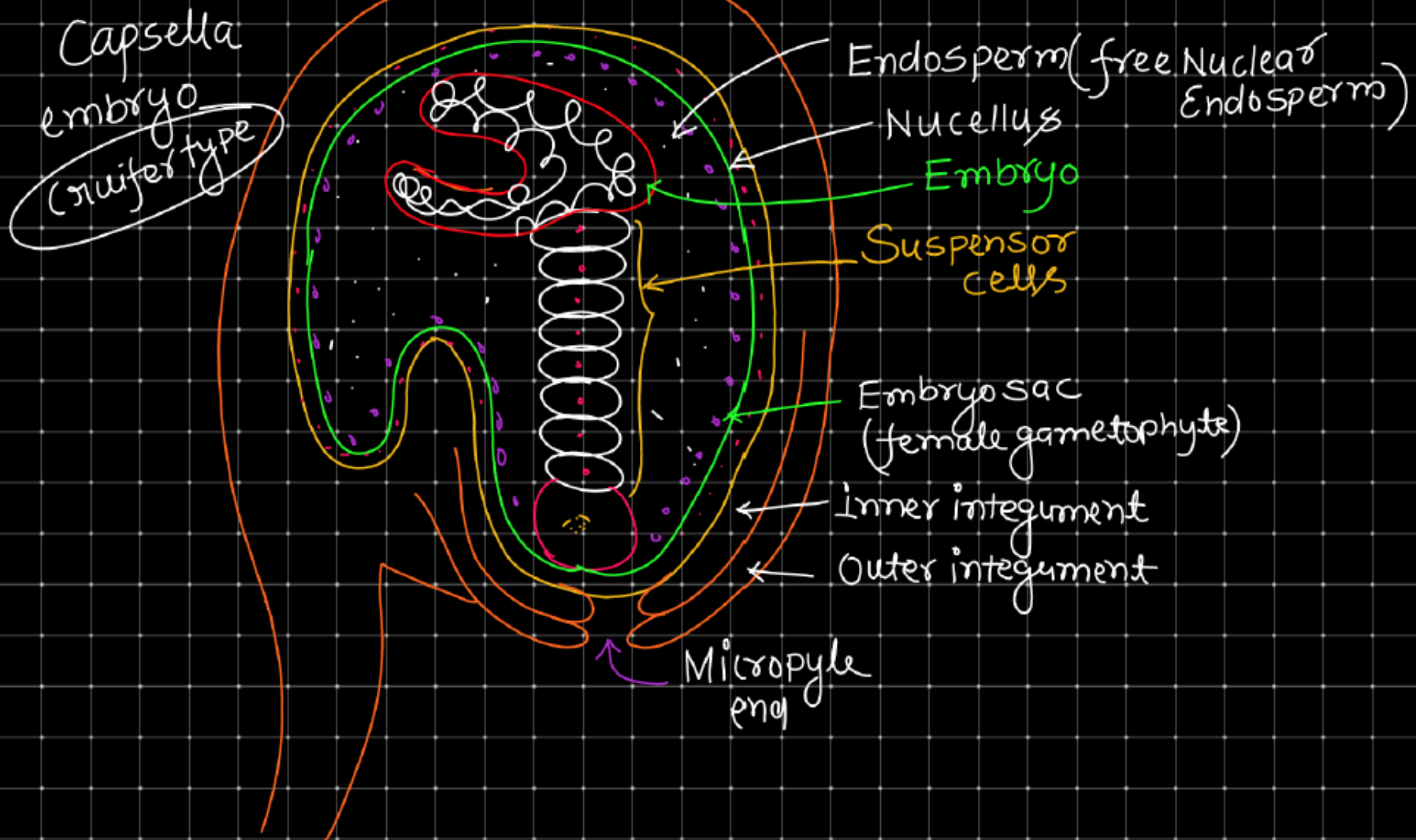
1st division
Transverse



Suspensor cell
6-10 cell

Octant
8-celled Stage





DEVELOPMENT OF ENDOSPERM

(TYPE OF Endosperm) PEN → PEC

NUCLEAR ENDOSPERM

/ Free Nuclear endo sperm

eg Dicotyledonae (polypetal)

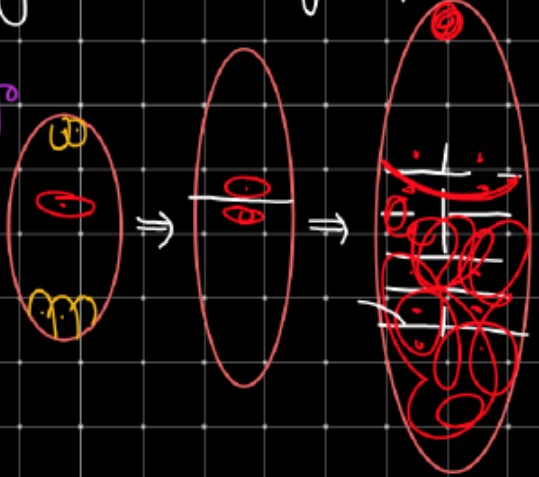
PEN → PEC



(Free Nuclear Endosperm)
Coconut water (Tender water)
(Made up of thousands of Nuclei)

CELLULAR ENDOSPERM

⇒ gamopetalae group



HELIOBIAL ENDO.

