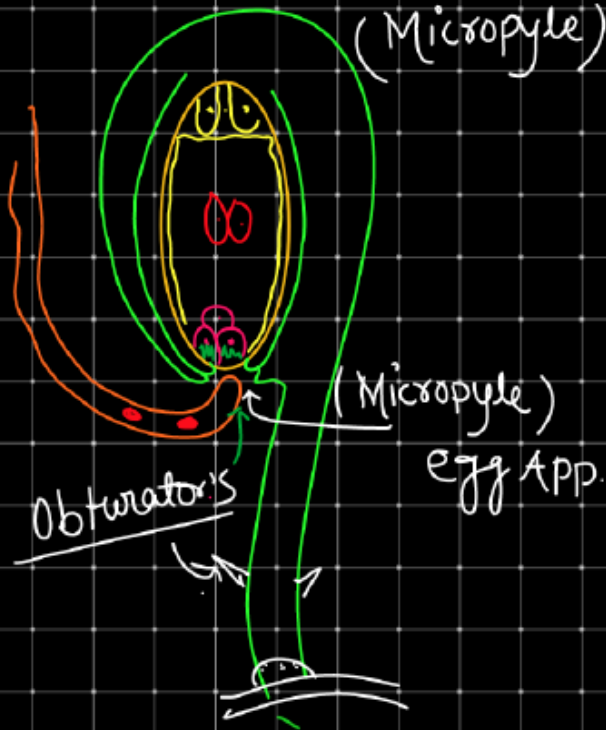


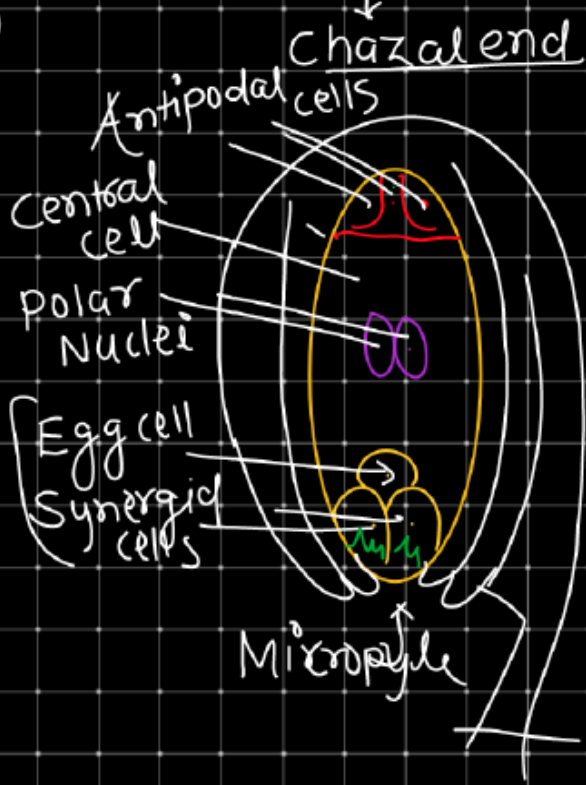
ENTRY OF POLLEN TUBE INTO OVULE

Ovary (ovule)

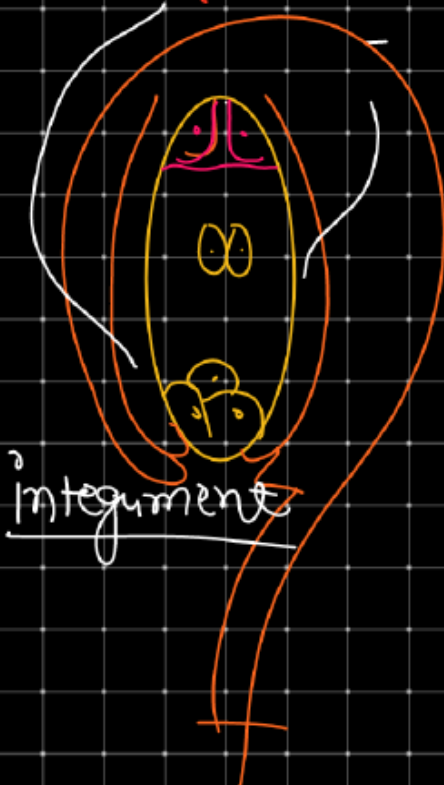
POROGAMY



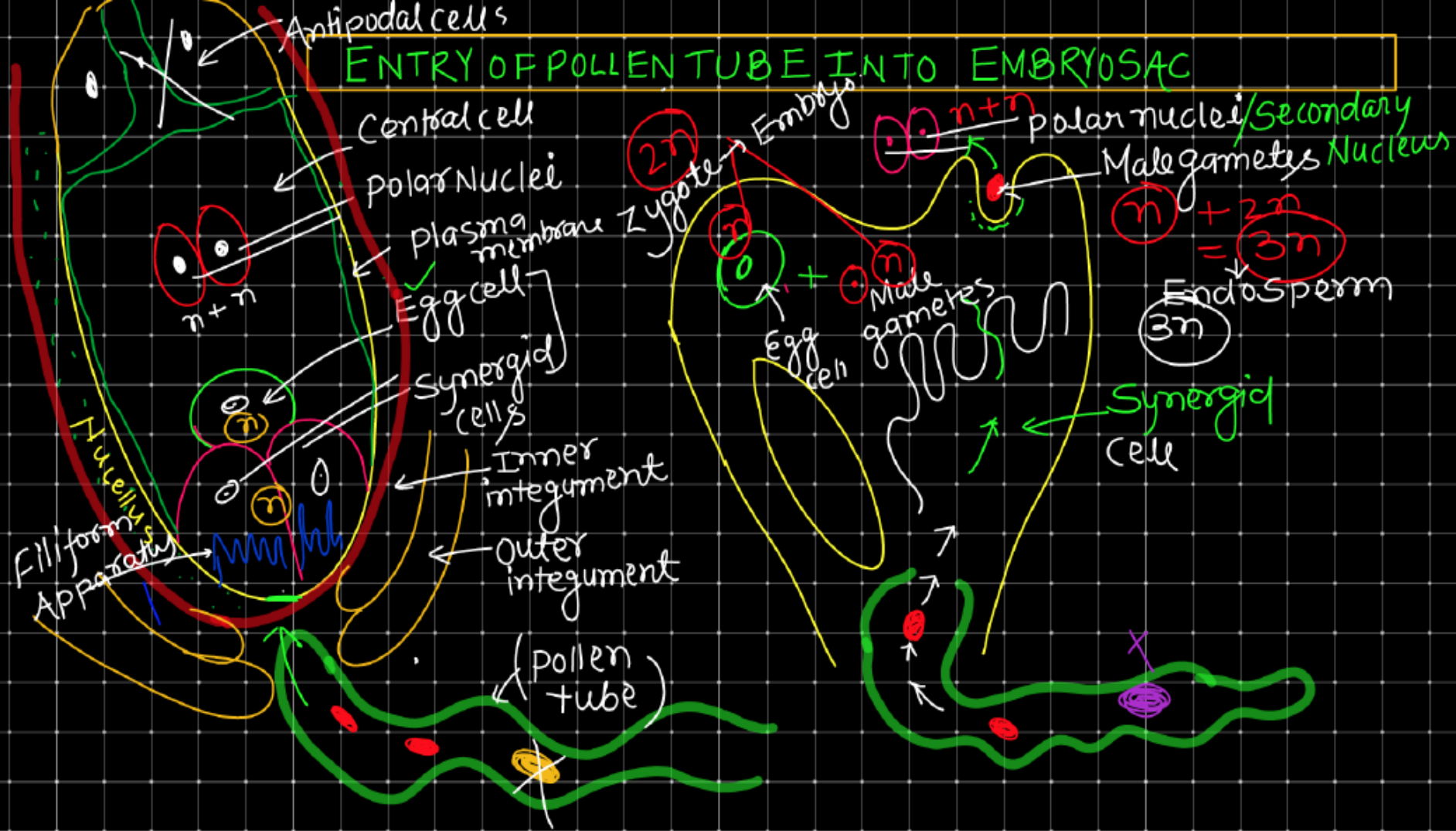
CHALAZOGAMY



MESOGAMY



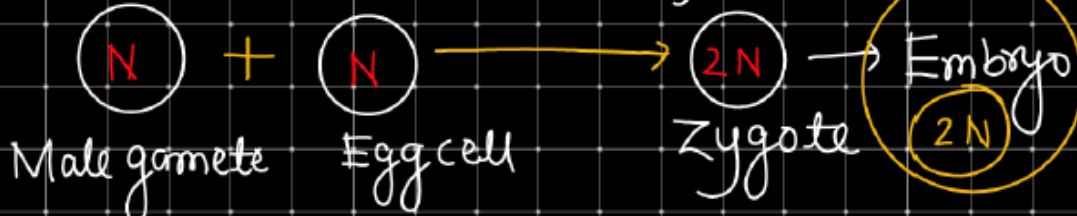
ENTRY OF POLLEN TUBE INTO EMBRYOSAC



★ **DOUBLE FERTILIZATION (Nauwschin)**
 (Fusion of gametes) *lilium/frutillariga*

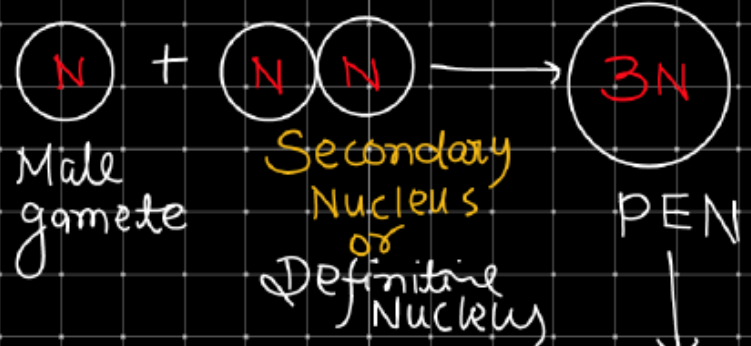
SYNGAMY

This fusion is known as true fertilization



★ Strasburger - Monotropa
 (True fertilization)
Syngamy

TRIPLE FUSION



Syngamy + Triple fusion = Double fertilization
 ↓
 Zygote - Embryo Endosperm

Endo Sperm

Results of Double fertilization

★
⇒

No. of gametes

+ No. of Nuclei

$(N) + (N) + (N)$
 (2 male gametes)
 ↓
 Pollentube
 ↓
 Egg
 ↓
 1

$(5) \Rightarrow (n+n) + n$
 polar nuclei + Male gametes
 Male + polar nucl
 (n) Secondary +
 $(2n)$