

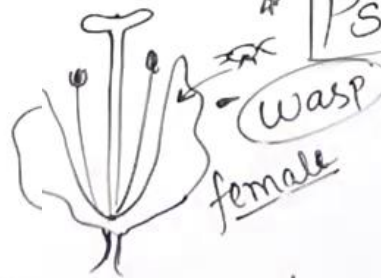
POLLINATION

(A) \* FLORAL REWARDS - eg. yucca, Am.  
 • Nectar,  
 • pollengrain 

\* Orchid (Ophrys Spetulum)

→ female wasp

\* Pseudo-copulation



Colpa Aurea

(B) - \* NECTAR ROBBERS / POLLEN (Many in <sup>or wind</sup> INSECT POLLINATION)

NEET 2021

\* Water hyacinth  
 (Eicchornia)  
Terror of Bengal

+  
Water lily

\* Nympha (Lotus,  
Nelumbus)

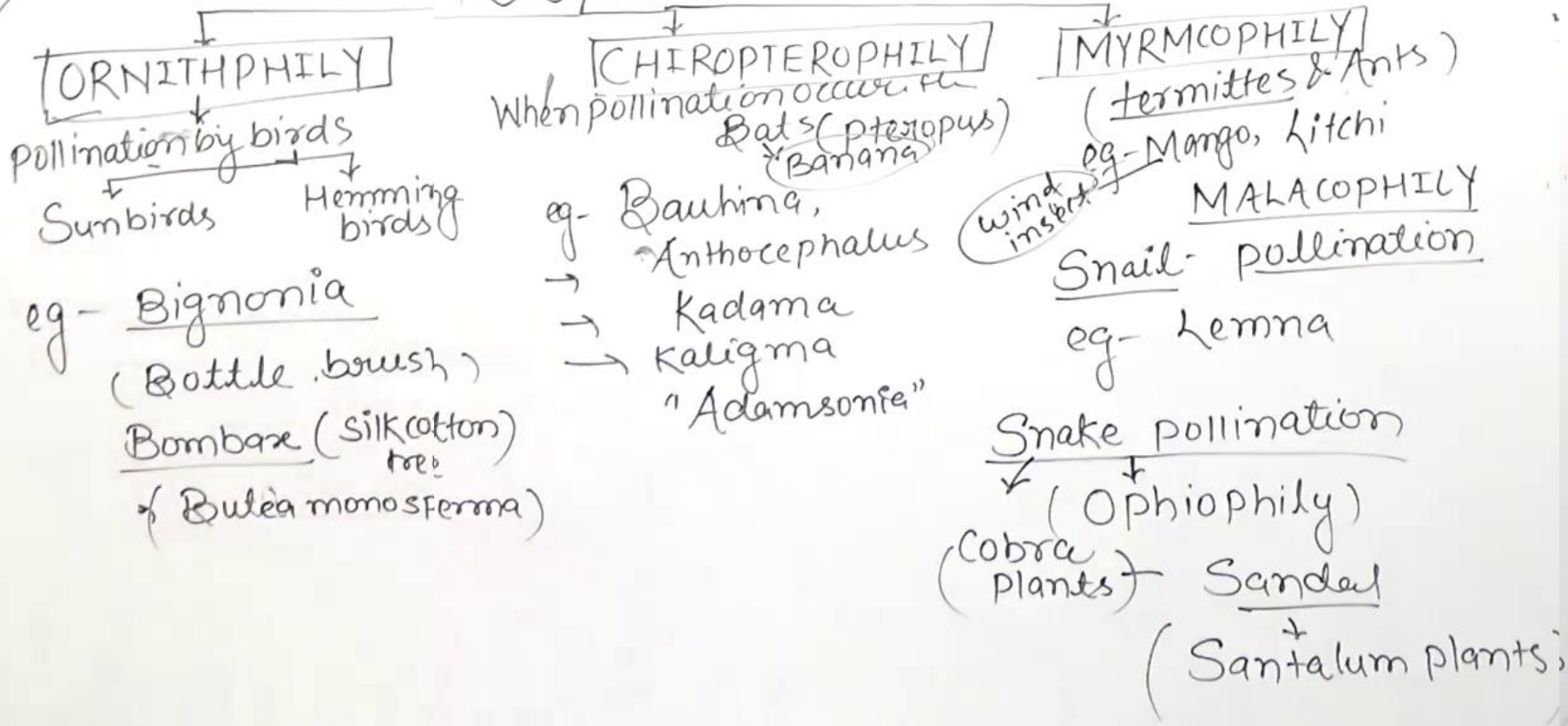
Rafflesia

Zoochory  
 ↓  
Seed dispersal  
 ↓  
elephant

Hydrophytes  
 ↓  
 (i)

(Foul colour like rotten meat)  
 ↓  
 pollination in  
 ↓  
Carrion flies

# POLLINATION



Stoan → (1884) <sup>(Miklin)</sup> **FERTILIZATION** → Internal fertiliz  
External fer.

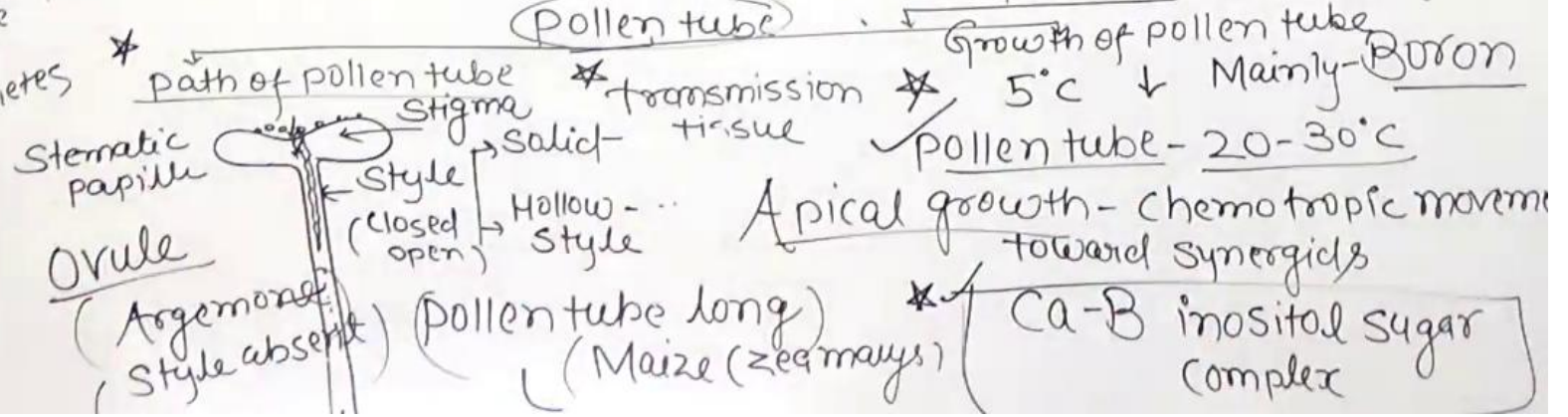
Fusion of male gametes with female gametes is called - fertilization



Monosiphonous  
(One pollen tube)  
↓  
Capsella and  
Most of Angio  
Sperm)  
G.B. Amici  
Pork kidney plant

Polysiphonous  
more than pollen  
tube  
↓  
Malvaceae  
and  
Cucurbitaceae  
राधिका रेजिया  
(10) pollen

- Germination of pollen grain
- Formation of pollen tube
- path of pollen tube
- Growth of pollen tube
- Entry of pollen tube into ovule
- Discharge of Male gametes
- Gametic fusion



Path of pollen tube transmission  
\* Growth of pollen tube 5°C ↓ Mainly - Boron  
\* Pollen tube - 20-30°C  
\* Apical growth - Chemotropic movement toward synergids  
\* Ca-B inositol sugar complex