

(Biotic factors)

ZOOPHILY → Animals

When the pollination through Animals

→ Bees, flies, moths, Beetles etc.
Wasp, ants etc.

Flower, Attractive, Nectar, large

(A) Entomophily

FLOWER

Entomophilous flower (insect pollination)

→ Most Attractive, large, with nectar colourfull and also emit fragrant
inflorescence - Small flower - (clusters)



pronuba

Yucca

MOTHS

→ Night flowering plant. by pollination → moth
→ white colour flower.

Pollination

↓ Honey bee

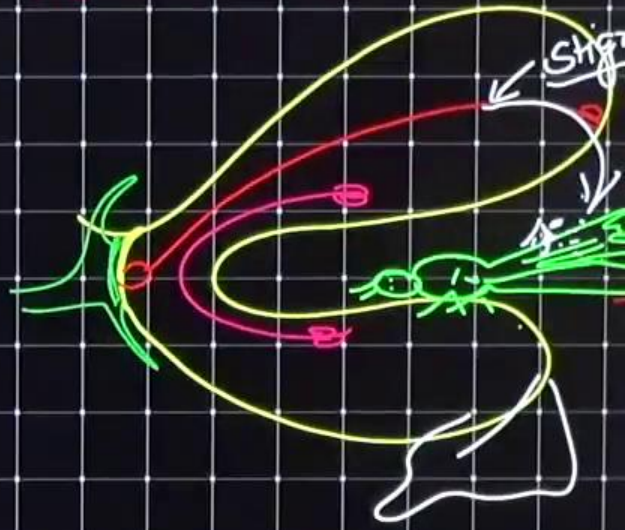
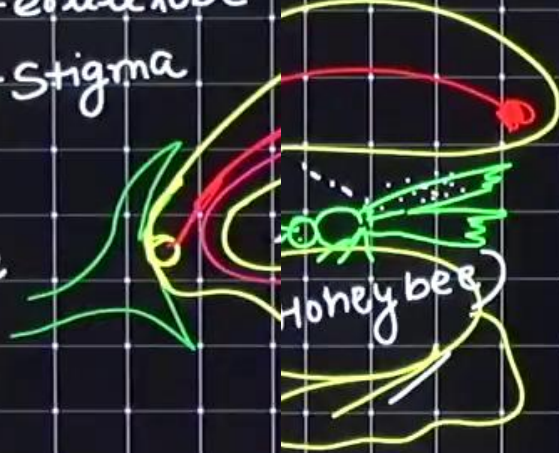
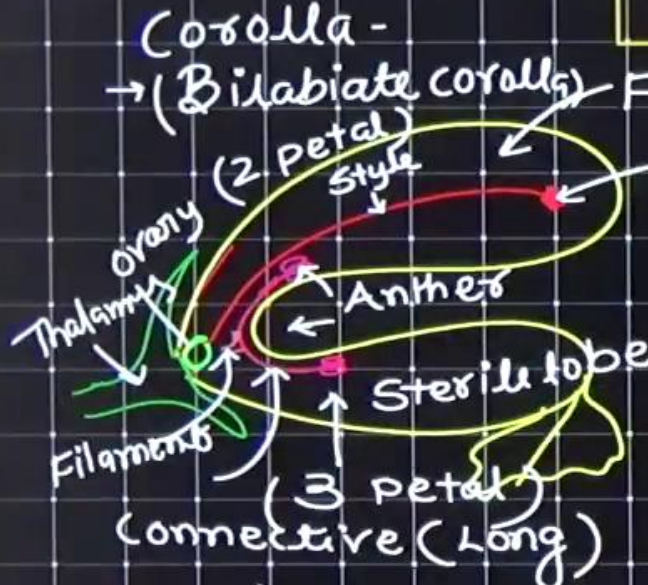
eg - Saliva (foul odour)

↓ Beetles

↓ Wasp
Blatophaga

LIVER MANISM / Turn-pipe

Mechanism



Liver mechanism (Sa plant)
 (Latae)

TRAP DNISM

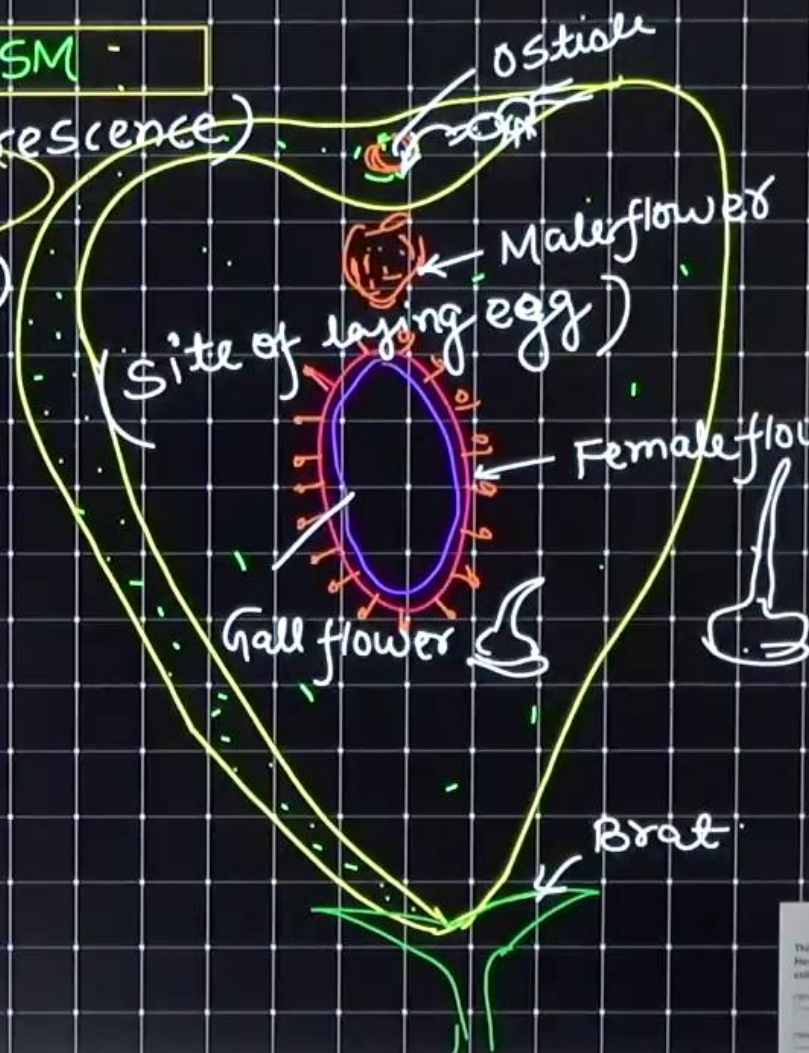
(Hypanthiflorescence)

eg- Ficus sp ^{Fi}
(Ficus bis)
peepal o

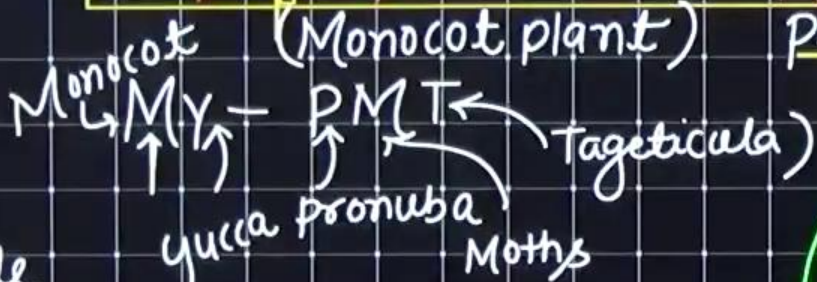
Wasp → Blastoph

(pollination)

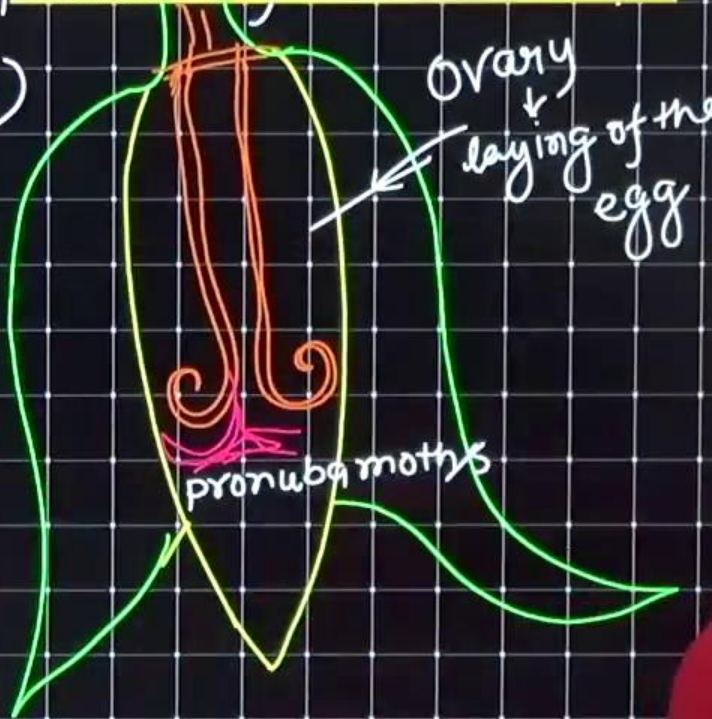
Trick → Wi-fi-blp
(protogyn)



YUCCA POLLINATION → Moths



pronuba yuccasela moths



Life cycle

→ yucca, and pronuba moths life cycle is depend on each other.