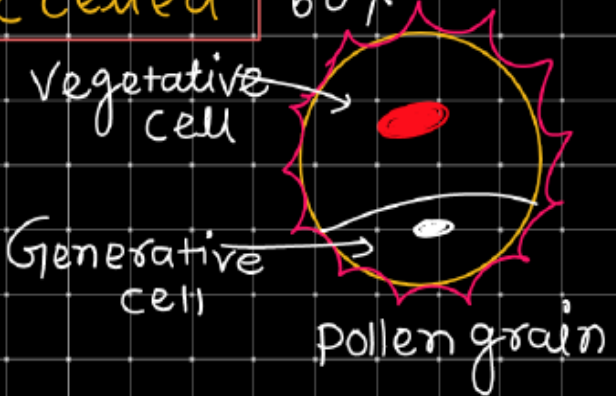


# MALE GAMETOPHYTE

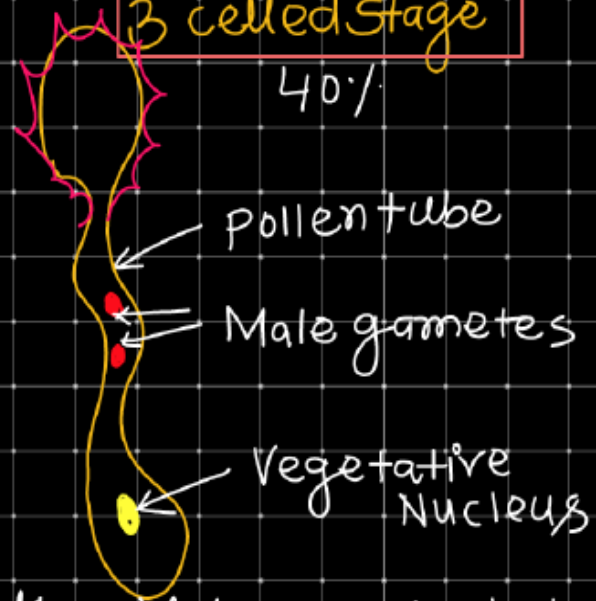
2 celled

60%

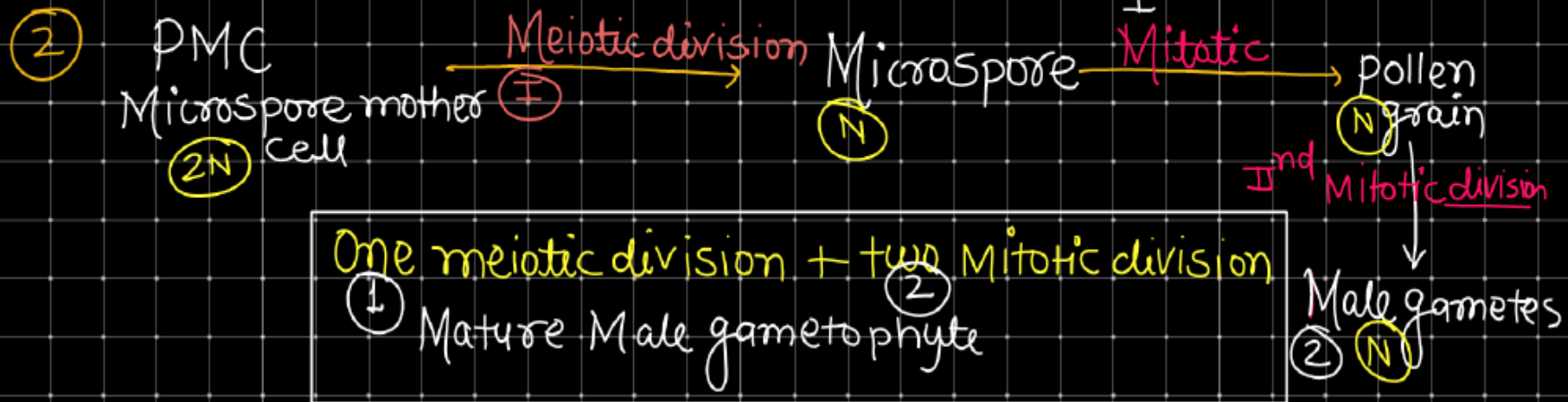
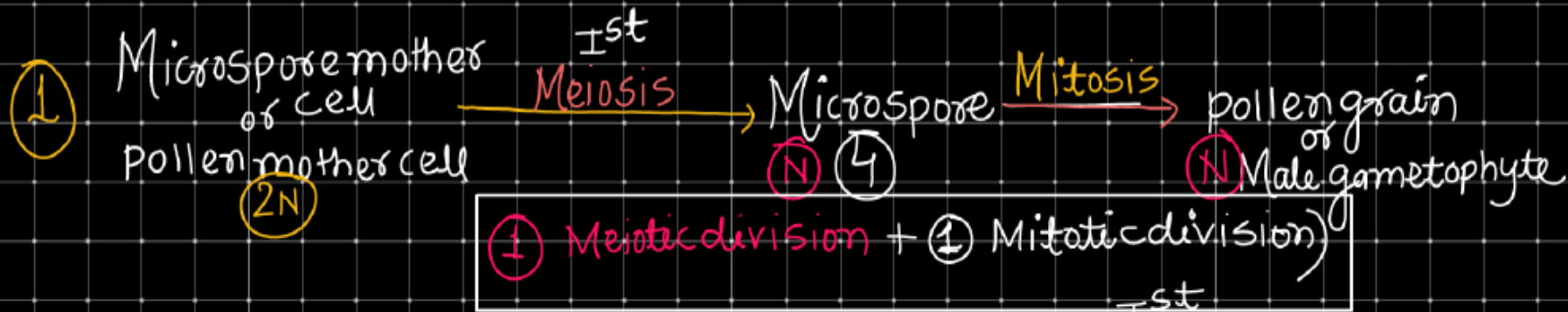


3 celled stage

40%



Completely \* Mature Male gametophyte of  
depend on Angiosperm - Reduced  
(Sporophyte) Highly



## POLLEN GRAINS

Cyperaceae  
↳ Cyperus

(Only one functional  
pollengrain)

• Largest pollengrain - Mirabilis

• Longest pollengrain - Zostera (Seagrass)

• Smallest pollengrain - Myosotis

Zostera Ribbon like

Hydrophytes → Filiform pollen / Filamentous pollen

pollen \* with out Exine

grain

Study of pollen grain - palynology

NEET 2018

Q1 Store of pollen grain of a larger number of species for year in temp.?

- 1)  $-120^{\circ}\text{C}$  2)  $-80^{\circ}\text{C}$  3)  $-196^{\circ}\text{C}$  4)  $-160^{\circ}\text{C}$

Q2 pollen grain can be used in -

- 1) Seed banks 2) Pollen banks 3) Embryo Bank 4) All

Store Seed in crop breeding programs)

### POLEN VAIBILITY

① Wheat and Rice  $\rightarrow$  30 min

NEET 2021

Pollen grain

Vaibility for a months (30 day)

Rosaceae

Leguminosae

Solanaceae

"रोज सौ लेनी महीने भर"

Solanaceae

Vaibility  $\rightarrow$  for a months