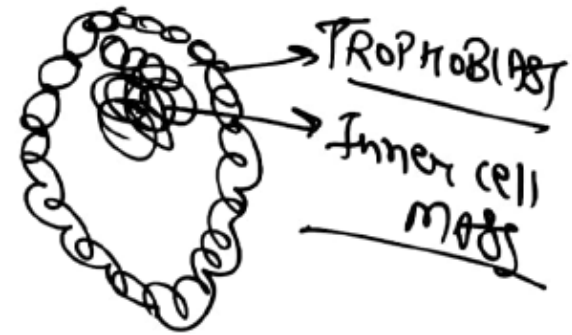
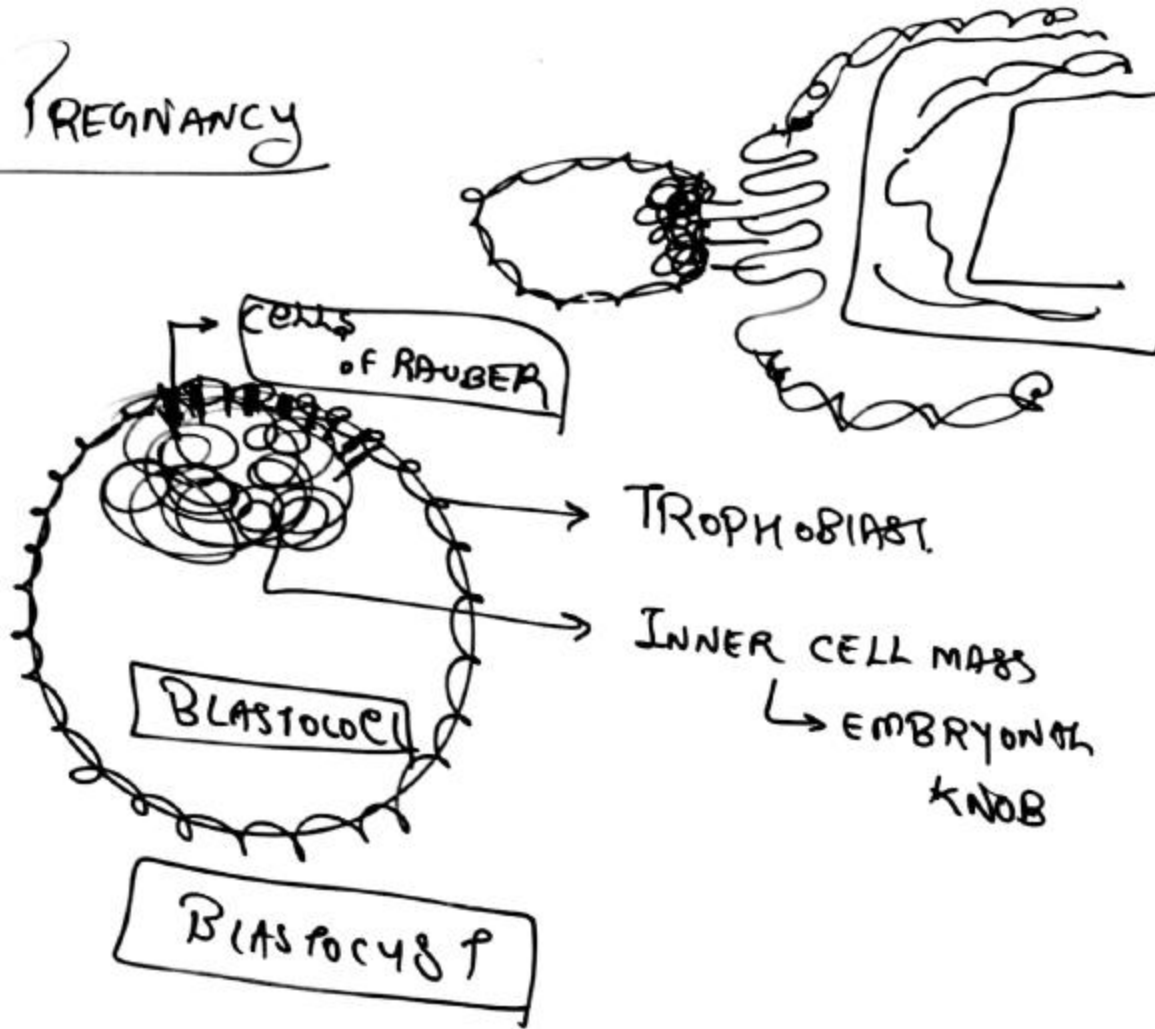


* BLASTULA of MAMMALS
 is known as ~~AS~~ BLASTOCYST
 ↳ ZONA PELLUCIDA disappears



ECTOPIC PREGNANCY

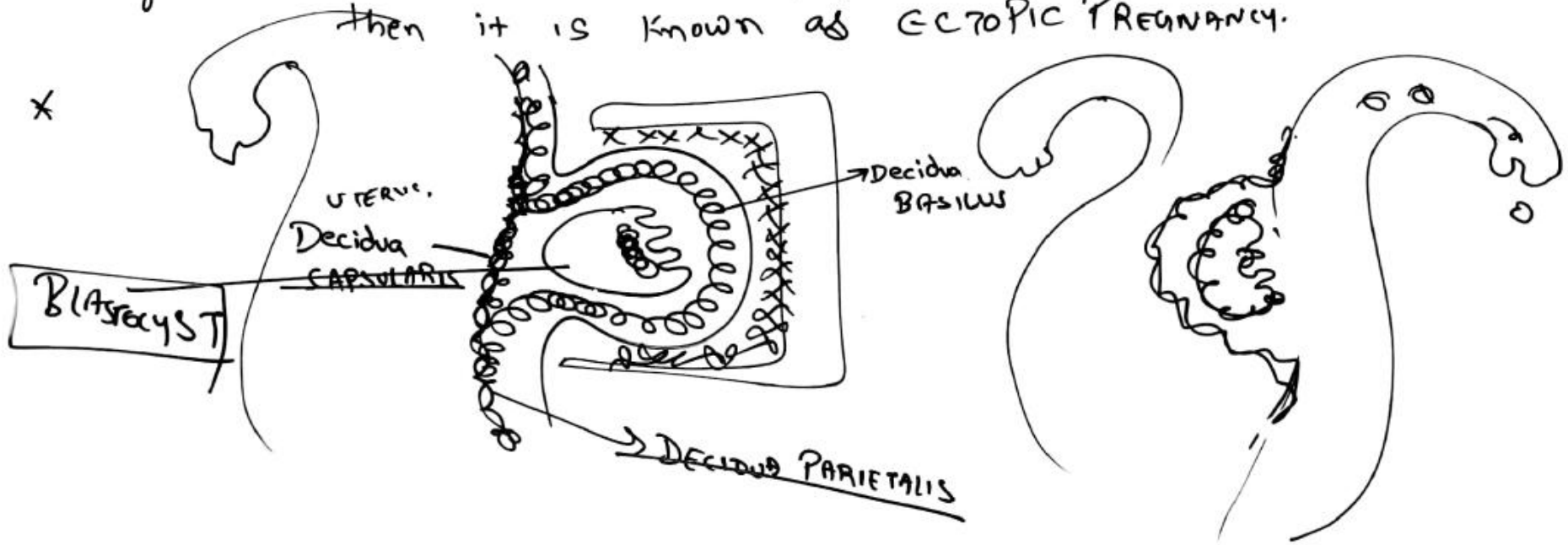


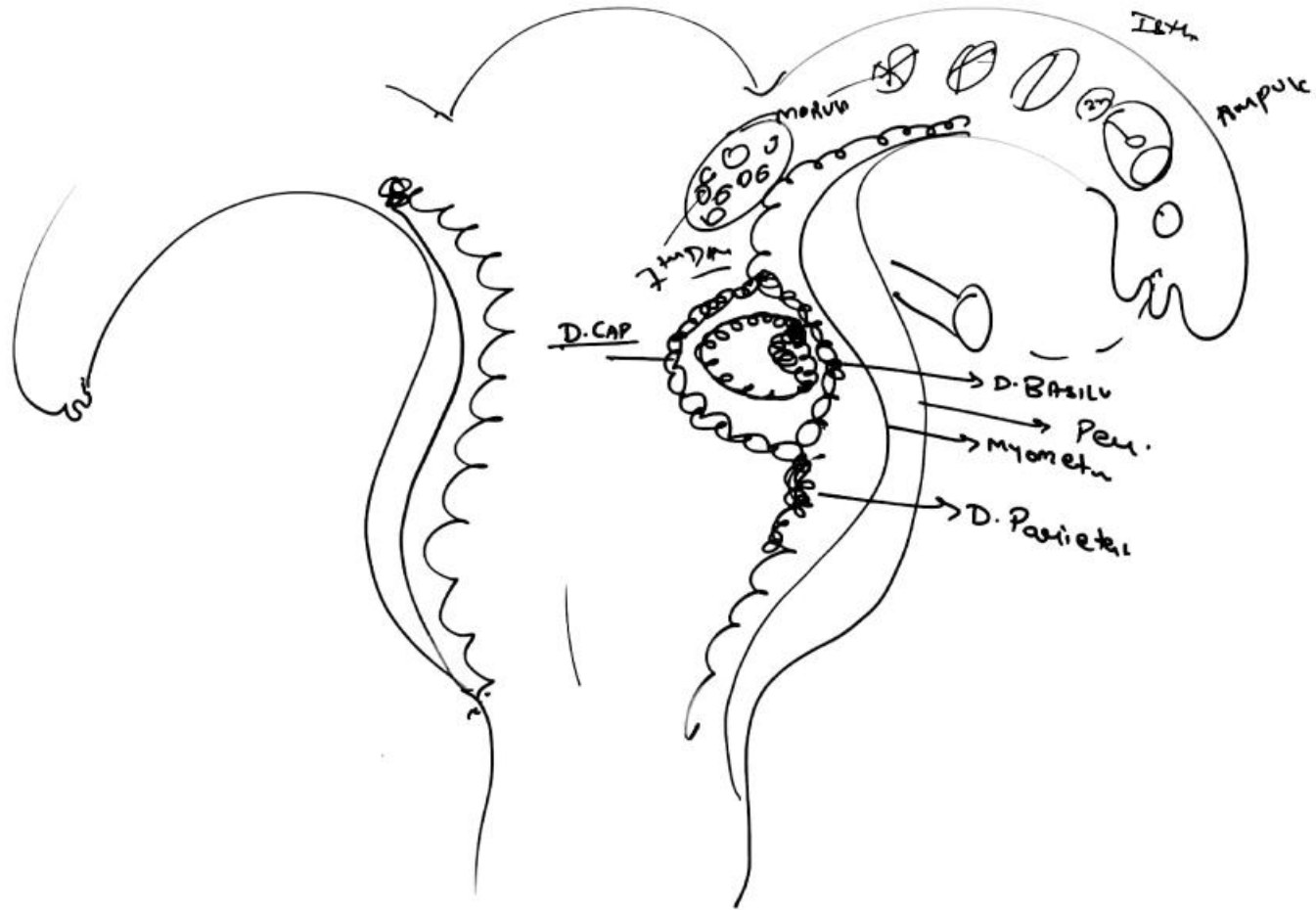
- * Blastomere in Blastocyst stage arranged into outer & inner layer.
- * Cells of trophoblast just above embryonal knob are called ^{Trophoblast} cells of Rauber. ^{Inner cell mass}
- * After attachment blastocyst get attached with endometrium about four days after entering uterus.
- y Implantation occurs in uterus.
- * After implantation wall of uterus is known as decidua instead of endometrium.
- * ZONA PELLUCIDA PREVENTS IMPLANTATION. THIS LAYER REMOVED IN BLASTOCYST STAGE.

* IMPLANTATION OCCUR AT 7TH DAY AFTER FERTILISATION.

* If IMPLANTATION OCCUR IN ANY OTHER PART OTHER THAN UTERUS then it is known as ECTOPIC PREGNANCY.

*





2nd week
After 8th Day

* HCG

HUMAN CHORIONIC
GONATROPIC
HORMONE



SYNCYTIOTROPHOBLAST
↳ enzymes

CYTOTROPHOBLAST
Positive

