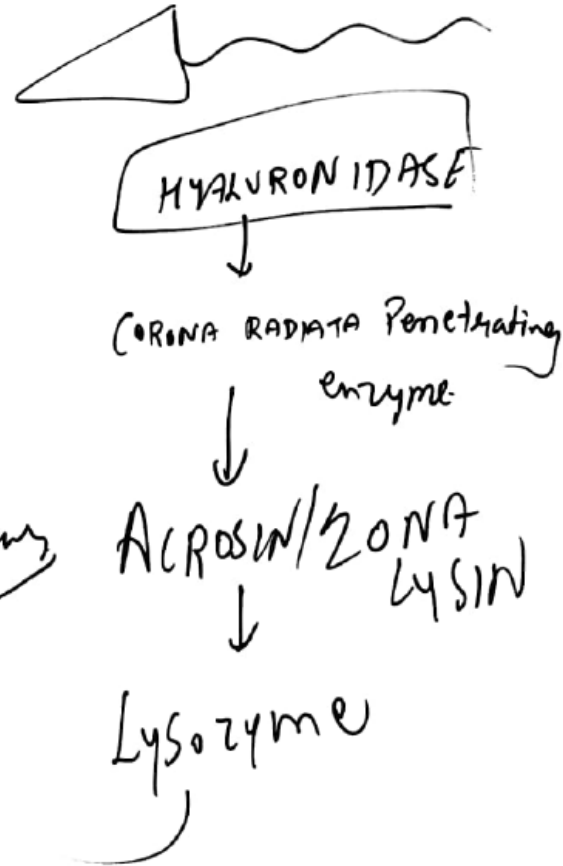
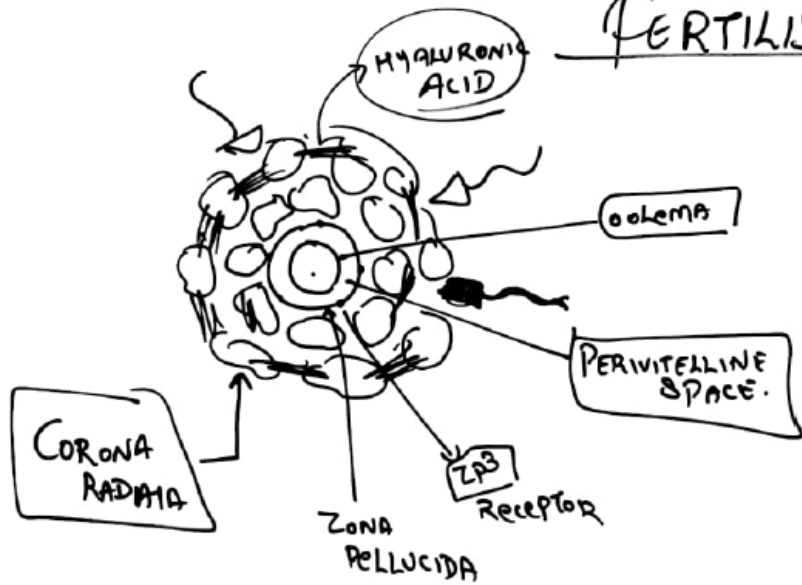


- \* Primary egg membrane, i- ZONA PELLUCIDA
- \* Sec. egg membrane = CORONA RADIATA.

# FERTILISATION



FERTILISATION:- PROCESS IN WHICH FUSION OF ♂ & ♀ GAMETE OCCURS

- ↳ ① SYNGAMY:
- ↳ ② PLASMOGAMY: → FUSION OF CYTOPLASM
- ↳ ③ KARMOGAMY: → FUSION OF NUCLEUS

→ DURING COUPULATION Penis release ♂ gamete in ♀ G. TRACT is known as Insemination

→ HUMAN SPERM can live weeks in male genitalia

\* **CAPACITATION:-** TO REMOVE CHOLESTEROL LAYER & MAKE SPERM ACTIVE IN F. G. I TRACT.

- X NOW SPERM WILL MOVE FROM VAGINA TO UTERUS & FINALLY REACHES TO AMPULLA
- X SIMILARLY Sec. <sup>oocyte</sup> Released from OVARY Now Reaches to Ampulla
- X SITE of FERTILISATION :-> AMPULLA
- X FERTILISATION CAN ONLY OCCUR IF SPERM & OVUM REACHES SIMULTANEOUSLY  
THAT'S WHY ALL COUPULATION DONT LEAD PREGNANCY
- X NOW ACROSOM of SPERM STARTS ITS ACTIVITY.

ACROSOMAL Rxn  
↓  
SPERM LY8IN

- ① **HYALURONIDASE** :- DISSOLVES HYALURONIC ACID of Follicle cells.
- ② **CORONA RADIATA PENETRATING ENZYME** → IT DISSOLVES CORONA RADIATA.
- ③ **ZONA LYSIN/ACROSIN** :-→ IT DIGEST ZONA PELLUCIDA.
- ④ **LYSOZYME** :-→ IT DIGEST P.M of oolema.

