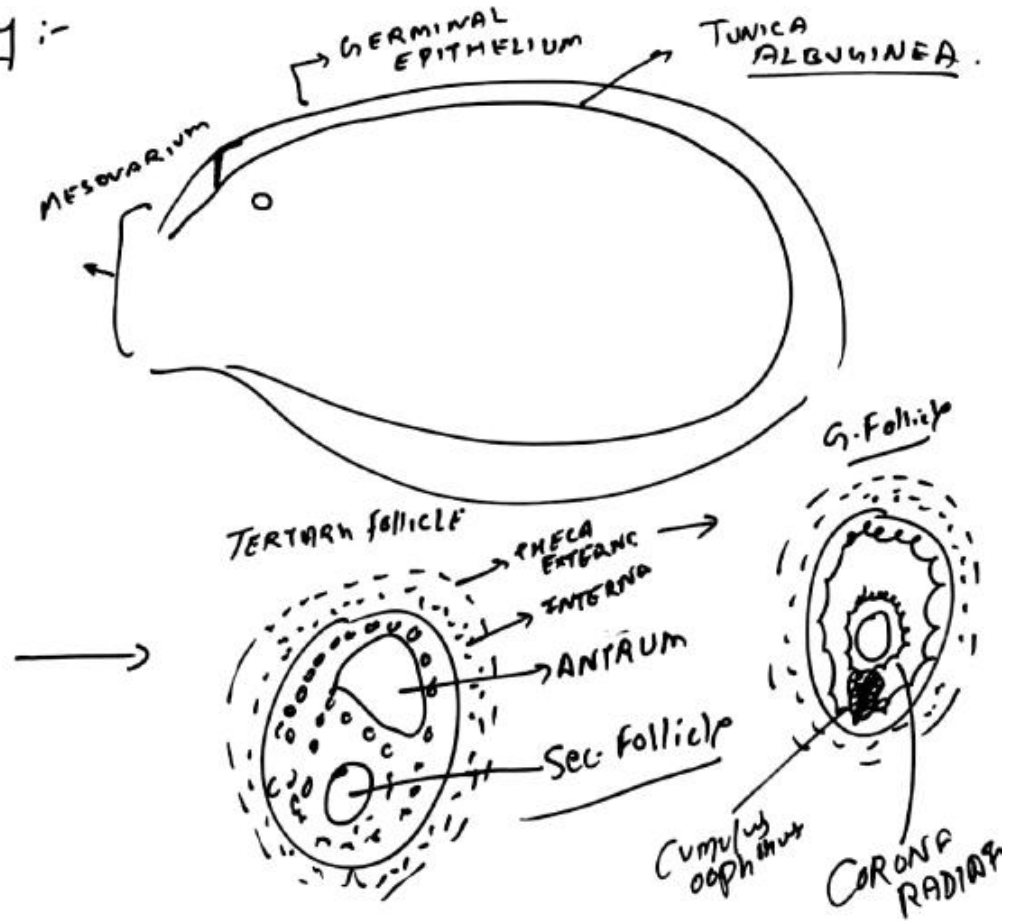
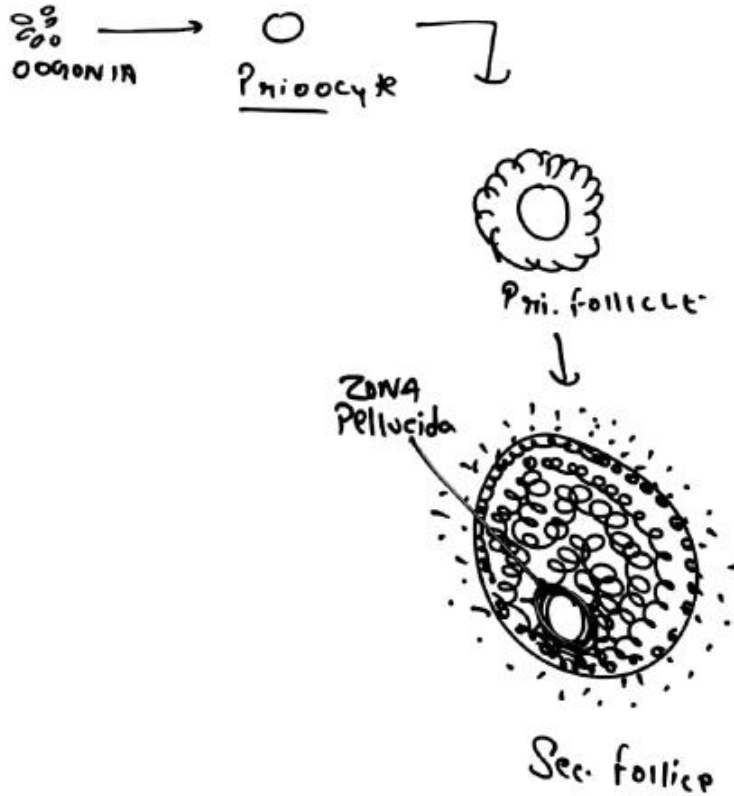


- * OOGENESIS STARTS IN EMBRYONIC LIFE. Millions of oogonia FORMED.
- * NO oogonia are FORMED or ADDED After BIRTH
- * 4 LAKH oogonia but till Puberty on 60,000 - 80,000 OOGONIA REMAINS IN EACH OVARY.
- ∴ Rest All OOGONIA degenerates that is known as FOLLICULAR ATRESIA.
- * OOGONIA FORMS PRIMARY oocyte IN GROWTH PHASE.
↳ YOLK is STORED.

↓
LECITHIN → PHOSPHOLIPID

<p>* <u>SPERMATOGENESIS</u></p> <ul style="list-style-type: none"> * continuous process * 1 SPERMATOCYTES → 4 SPERM * equal division 	}	<p style="text-align: center;">oogenesis</p> <ul style="list-style-type: none"> * discontinuous * 1 oogonia → 1 ovum * unequal division
---	---	--

STRUCTURE OF Ovary :-



STRUCTURE OF VARY :-

- ① EACH Pri. oocyte IS SURROUNDED BY GRANULOSA cells & known as Pri. FOLLICLE.
- ② DURING PUBERTY MORE GRANULOSA cells SURROUNDS Pri. follicle & converts into Sec. follicle.
↳ It is also covered BY THECA COVED.
- ③ Sec. follicle transfer into Tert. follicle.
In tert follicle → there is FLUID filled cavity "Antrum"
↳ Liquor folliculi
↳ THECA differentiate into 2 layer
 ↳ OUTER-THECA Externa
 ↳ INNER-THECA Interna
 ↳ Estrogen.
→ Pri oocyte converts into Sec. oocyte.
 ↳ Sec. oocyte is covered by ZONA Pellucida.

- ④ Now Tert. follicle converts into G. follicle.
egg ↓ is conn. granulosa layer by Corona Hill or Cumulus oophorus
 ↳ sec. oocyte covered by CORONA RADIATA.
* AT 14th DAY OF MENSTRUAL CYCLE GF RUPTURES & Release Sec. oocyte.

STRUCTURE OF Ovary :-

* MAMMALIAN egg is covered BY 2 MEMBRANE

↳ **ZONA PELLUCIDA**

It is secreted by
Sec. oocyte.

↳ IT IS NON CELLULAR Layer made up
of GLYCOPROTEIN. It is Peri. membrane,

CORONA RADIATA

↳ OUTER Layer, secreted by OVARY

↳ It is cellular

* AFTER ovulation Remaining
GRAFFIAN Follicle converted
into CORPUS LUTEUM



* C. Luteum Temp. endocrine
gland. (Progesterone)

* If Fertilisation occurs
then C. Luteum maintain
9 MONTH

* If not Fertilised
C. Luteum converts into
CORPUS ALBICANS

STRUCTURE OF Ovary :-

