

FEMALE REPRODUCTIVE SYSTEM

UTERUS

↓
WOMB / HYSTERA

→ It SITE OF ATTACHMENT

→ 3 LAYERS

→ OUTER

↳ PERIMETRIUM

↳ Str. Squamous epi
&
AREOLAR C.T.

→ MIDDLE LAYER

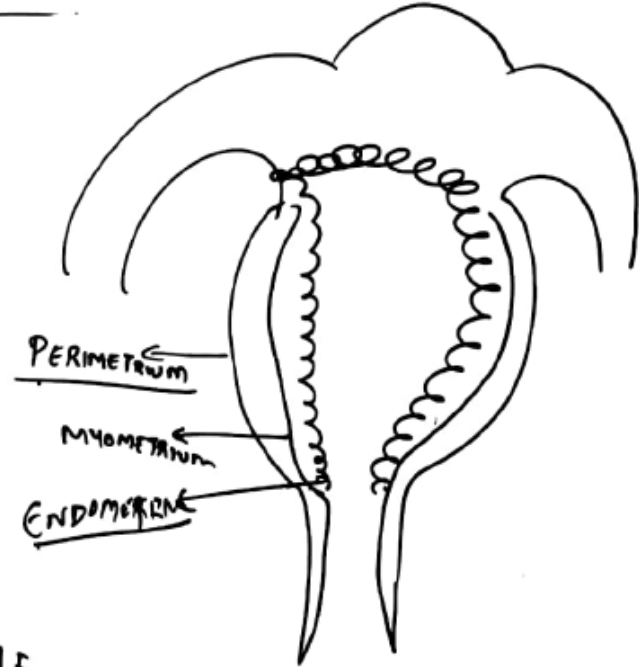
→ MYOMETRIUM

↳ SMOOTH MUSCLE

→ INNER LAYER

→ ENDOMETRIUM

↳ Regenerative



101

FEMALE REPRODUCTIVE SYSTEM

VAGINA:- IT IS ALSO KNOWN AS BIRTH CANAL

↳ COPULATORY ORGAN & BIRTH

↳ VAGINA IS LINED IS Non keratinised str. sq. epi.

↳ VAGINA IS COVERED BY HYMEN.

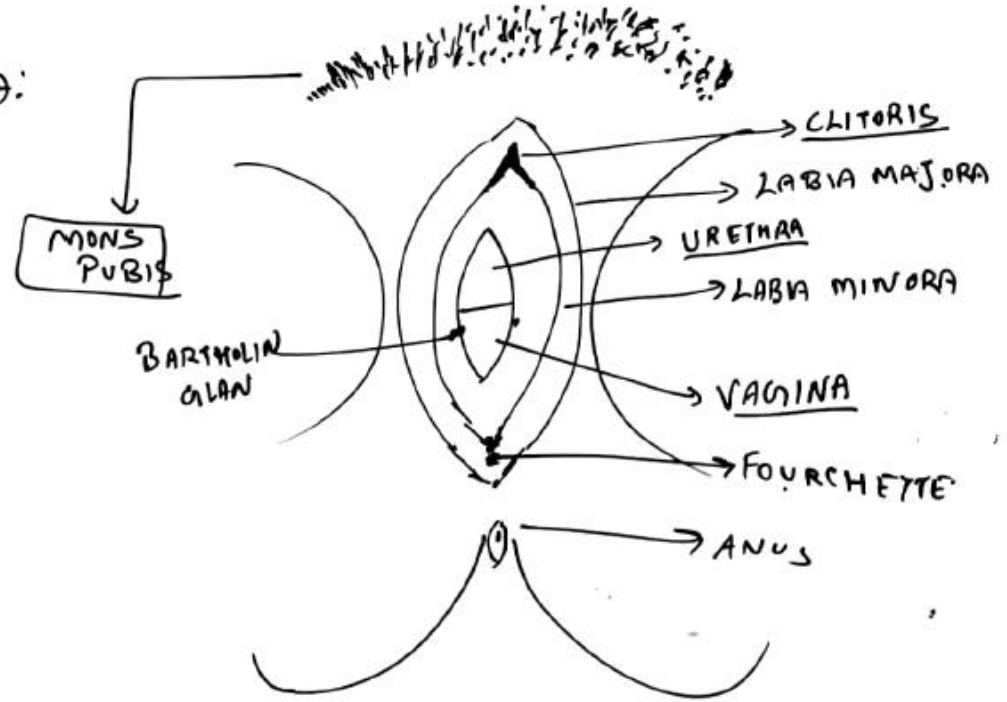
FEMALE REPRODUCTIVE

STR. → OVARIES, MESOVARIUM, OVARIAN LIGAMENT, INFUNDIBULUM, FIMBRIAE, AMPULLA, ISTHMUS, FUNDUS, UTERUS ← PERIMETRIUM, MYOMETRIUM, ENDOMETRIUM, CERVIX, VAGINA, HYMEN

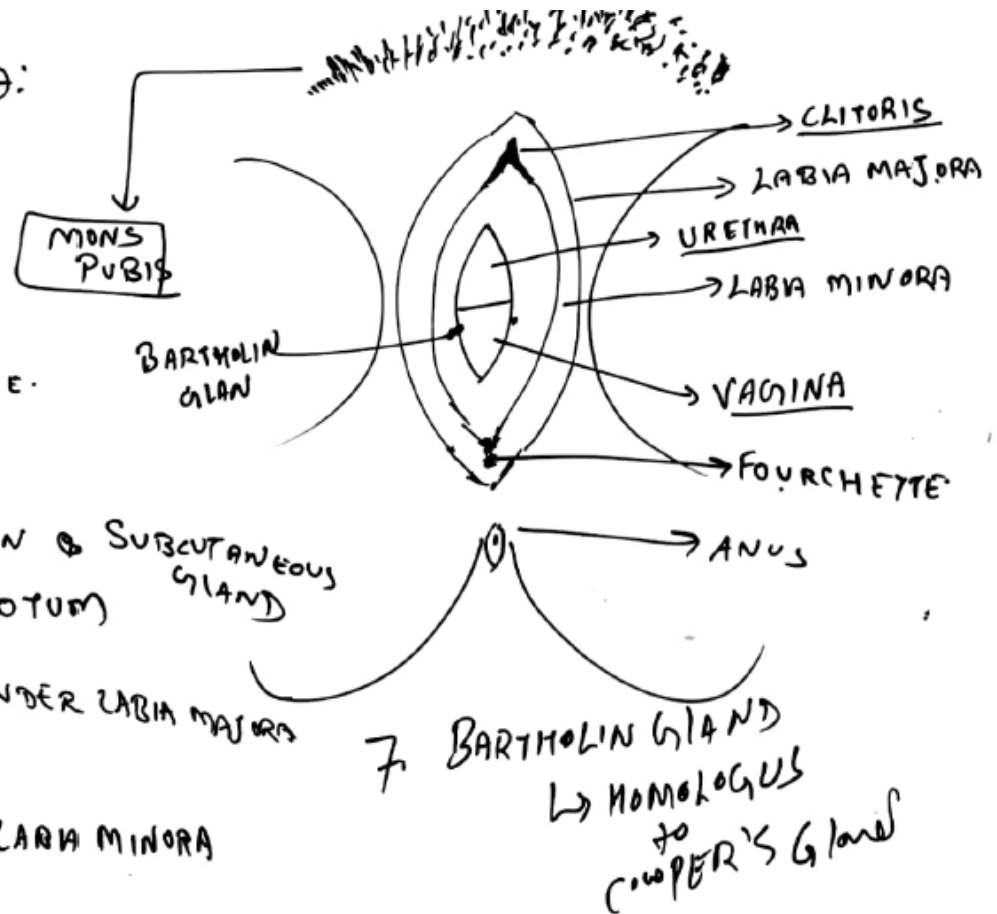
FEMALE EXTERNAL GENITALIA:

OR
VULVA

1 MONS PUBIS



FEMALE EXTERNAL GENITALIA:
OR
VULVA



1. MONS PUBIS
↳ IT IS CUSHION OF FATTY TISSUE.
↳ IT CONTAINS HAIRS
2. LABIA MAJORA :- FOLDS OF SKIN & SUBCUTANEOUS GLAND
↳ HOMOLOGOUS TO SCROTUM
3. LABIA MINORA :- THIN FOLDS UNDER LABIA MAJORA
4. CLITORIS :- ERECTILE BODY PROJ. OF LABIA MINORA
↳ HOMOLOGOUS PENIS
5. URINAL OPENING :- URETHRA
6. VAGINA -