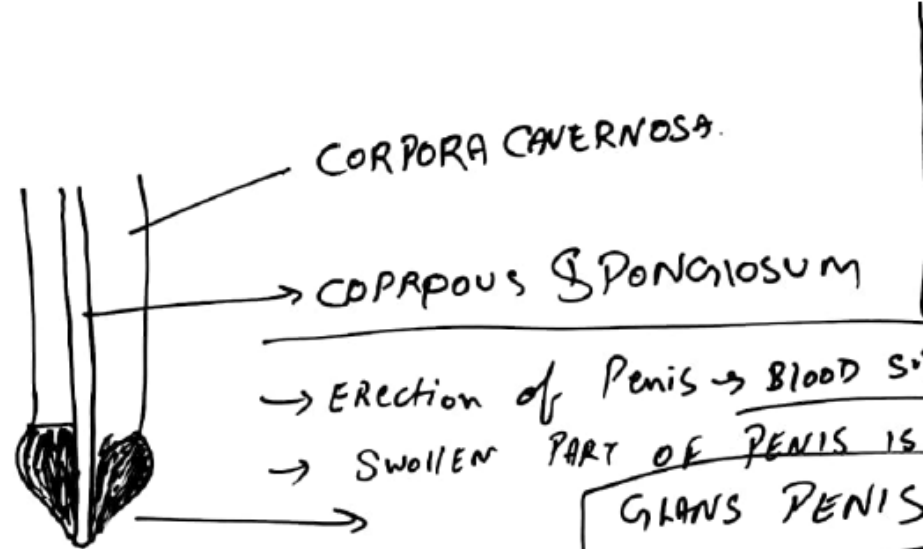


PENIS



- * MALE EXTERNAL GENITALIA
- * It is common PATHWAY for URINE & male Gamete Pathway

→ Erection of Penis → BLOOD SUPPLY
 → SWOLLEN PART OF PENIS IS CALLED

GLANS PENIS

IS COVERED BY SKIN → Prepuce / Foreskin

- * It 3 ERECTILE TISSUE
 - ← 2 CORPORA CAVERNOSA
 - ← 1 CORPUS SPONGIOSUM

* NORMAL condⁿ Penis
 muscle contracted -
 but Sexual desire muscle Relax

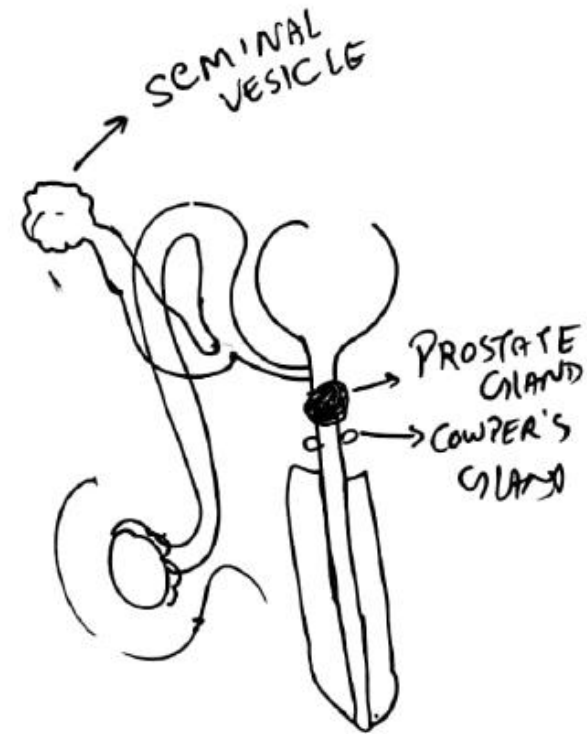
* PENIS CONTAIN TYSON ISLAND
 ↓
SMEGMA

B PROSTATE GLAND
↓

- It is UNPAIRED STRUCTURE
- It is PRESENT BELOW URINARY BLADDER
- It's secretion is 30% of Semen

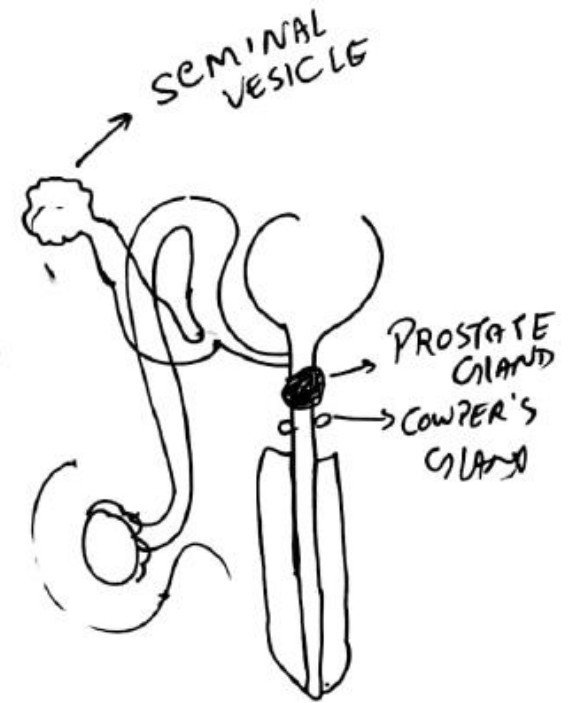
→ It is ALKALINE, MILKY Appearance

→ It contains clotting enzyme, Prothrombin
↓
Dissolves
CLOT

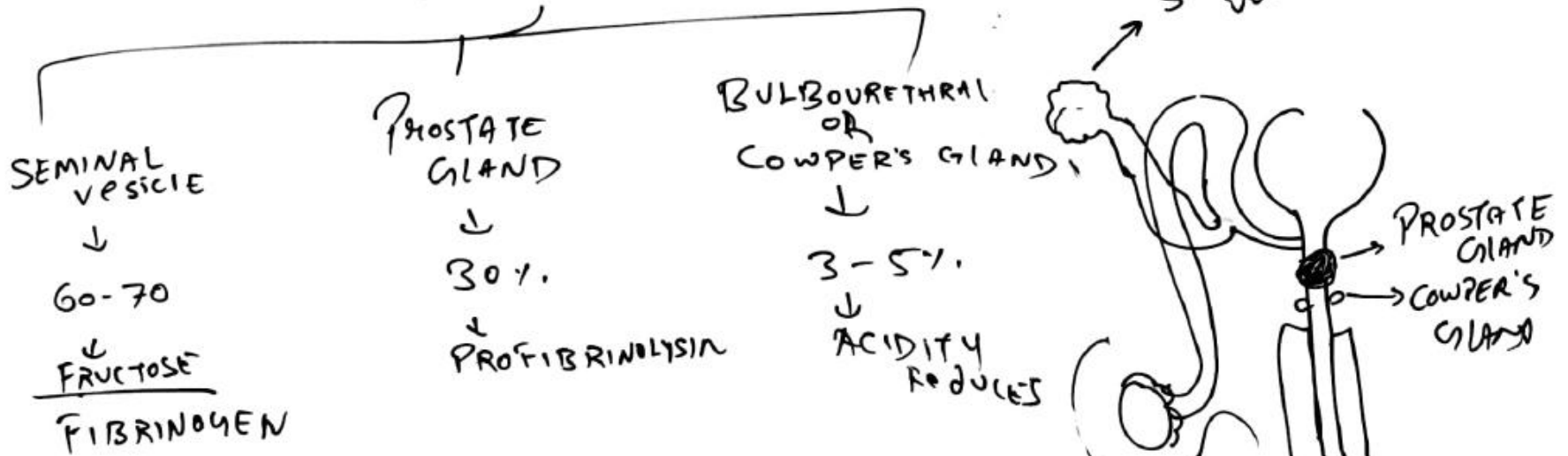


(C) COWPER'S GLAND

- IT IS ALSO KNOWN AS BULBOURETHRAL GLAND
- IT'S SECRETION 3-5% OF SEMEN.
- ALKALINE NATURE, Jelly like fluid.
- IT IS PAIRED STR. Found on either side of URETHRA.
- It neutralise ACIDITY of URETHRA.



SEMINAL PLASMA



SEMEN = SEMINAL PLASMA + SPERM
 Single ejaculation :- 200-300 million SPERM

(NORMAL SPERM COUNT = (20-120 million))
 OLIGOSPERMIA < 20 million
 AZOSPERMIA = 0 SPERM